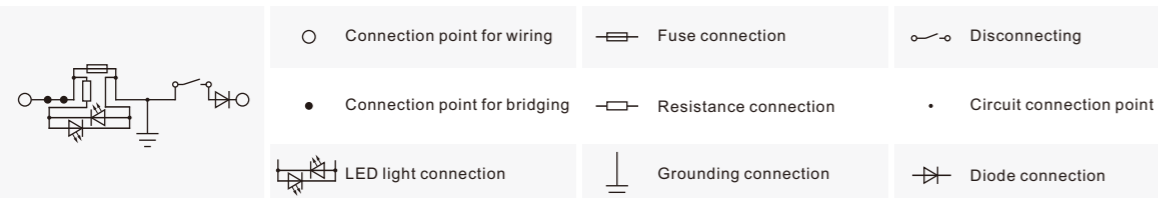
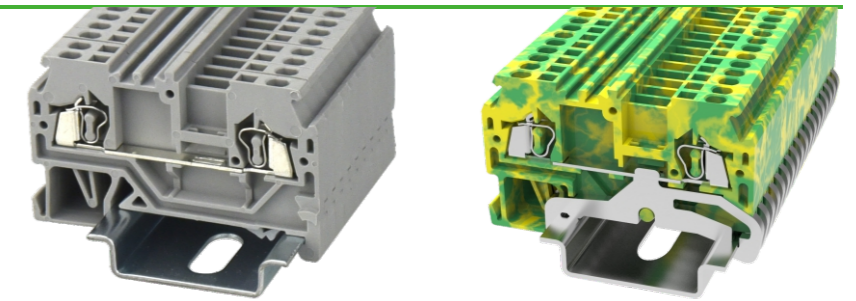


Description	Part No.	Remark
Terminal strip marker carrier	DLM2-01P-17-00A(H)	Suitable for E-PC, use for marking
End stopper	E-PC-01P-11-1000A(H)	Fixing products on NS35 DIN rail
End cover	D-WS1.5-SD-01P-11-00A(H)	End cover is used for WS1.5-SD
Adjacent jumper	WFA1.5-01P-11-00A(H)	02P bridge, use for WS1.5 series
End cover	D-WS1.5-01P-11-00A(H)	End cover is used for WS1.5&WS1.5-PE
End cover	D-WS1.5-TW-01P-11-00A(H)	End cover is used for WS1.5-TW&WS1.5-TW-PE
Marker	ZB4-10P-19-00A(H)	Marker is used for the top of WS1.5 series
End cover	D-WS1.5-QU-01P-11-100A(H)	End cover is used for WS1.5-QU-100A(H)
Alternate jumper	WFB1.5-01P-11-00A(H)	02P bridge, use for WS1.5 series
End cover	D-WS1.5-QU-01P-11-00A(H)	End cover is used for WS1.5-QU-100A(H)
⑪ Marker	DEK4-50P-19-00A(H)	Marker is used for the side of WS1.5 series
⑫ End stopper	E-WS-01P-11-00A(H)	Fixing products on NS35 DIN rail
⑬ DIN rail	NS35/7.5-0150-00A(H)	NS35 DIN rail

Circuit diagram

Spring-cage connection technology
Feed-through, multi-conductor and ground terminal blocks

WS1.5

WS1.5-PE

Notes: For additional accessories and operating instruction, see page 29.

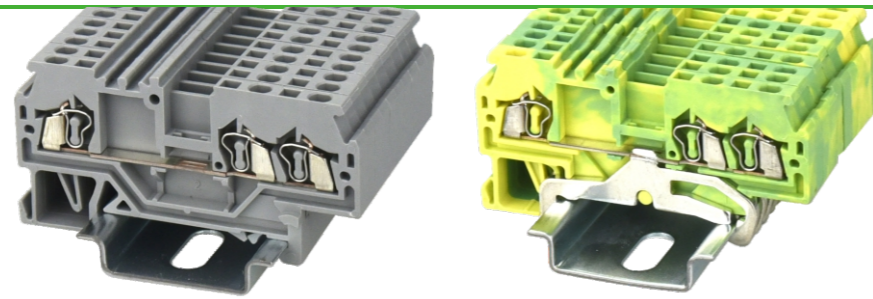
cULus CE ENE RoHS REACH

CE ENE RoHS REACH

Dimension	WS1.5				WS1.5-PE			
	Width	Length	Height	NS35/7.5&NS35/15	mm	IEC	UL	IEC
Width/Length/Height(NS35/7.5&NS35/15) mm	4/51.8/34.55(42.05)				4/51.8/34.55(42.05)			
Electrical Parameter	IEC IEC60947-7-1		UL UL1059		IEC IEC60947-7-2		UL UL1059	
Rated voltage V	800		600		/		/	
Rated current A	18		10		/		/	
Wire range mm ² /AWG	0.2-1.5		28-16		0.2-1.5		28-16	
Rated surge voltage/Degree of pollution KV/-	8/3				8/3			
Overvoltage category/Insulation material group -/-	III / I				III / I			
Connection capacity	Solid	Stranded	Ferrule (with and without plastic sleeve)		Solid	Stranded	Ferrule (with and without plastic sleeve)	
1 conductor mm ²	0.2-1.5	0.2-1.5	0.2-1.5	0.2-0.5	0.2-1.5	0.2-1.5	0.2-1.5	0.2-0.5
2 conductors with same cross section, stranded, TWIN ferrules with plastic sleeve mm ²	-	-	-	0.5	-	-	-	0.5
General information	Insulation material/Flammability rating(according to UL 94)				PA/V0			
Operation temperature °C (°F)	-40(-40)~105(221)				-40(-40)~105(221)			
Stripping length mm	8-9				8-9			
Color	Gray (customization demand is available)				Green-yellow			
Slotted screwdriver size (Blade thickness x Width) mm	0.4x2.5				0.4x2.5			
Accessories	Adjacent jumper (2P)				WFA1.5			
	Alternate jumper (2P)				WFB1.5			
	Staggered jumper (2P)				/			
	End cover				D-WS1.5			
	Marker (Top)				ZB4&WB4			
	Marker (Side)				DEK4			
	Warning cover				EEA1.5			
	DIN rail				NS35/7.5 & NS35/15 (Steel and Aluminium alloy are optional)			
	End stopper				E-WS&E-PC&E-MK			

Spring-cage connection technology

Feed-through, multi-conductor and ground terminal blocks


WS1.5-TW

WS1.5-TW-PE

Notes: For additional accessories and operating instruction, see page 29.

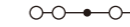
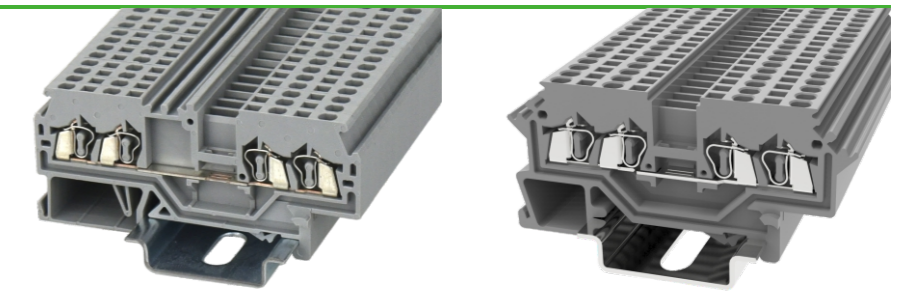
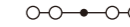
UL US CE ENEC RoHS REACH

CE ENEC RoHS REACH

Dimension	UL US CE ENEC RoHS REACH				CE ENEC RoHS REACH			
Width/Length/Height(NS35/7.5&NS35/15) mm	4/62.5/34.55(42.05)				4/62.5/34.55(42.05)			
Electrical Parameter	IEC IEC60947-7-1		UL UL1059		IEC IEC60947-7-2		UL UL1059	
Rated voltage V	800		600		/		/	
Rated current A	18		10		/		/	
Wire range mm ² /AWG	0.2-1.5		28-16		0.2-1.5		28-16	
Rated surge voltage/Degree of pollution KV/-	8/3				8/3			
Overvoltage category/Insulation material group -/-	III /I				III /I			
Connection capacity	Solid	Stranded	Ferrule (with and without plastic sleeve)		Solid	Stranded	Ferrule (with and without plastic sleeve)	
1 conductor mm ²	0.2-1.5	0.2-1.5	0.2-1.5	0.2-0.5	0.2-1.5	0.2-1.5	0.2-1.5	0.2-0.5
2 conductors with same cross section, stranded, TWIN ferrules with plastic sleeve mm ²	-	-	-	0.5	-	-	-	0.5
General information	PA/V0				PA/V0			
Insulation material/Flammability rating(according to UL 94)	PA/V0				PA/V0			
Operation temperature °C (°F)	-40(-40)~105(221)				-40(-40)~105(221)			
Stripping length mm	8-9				8-9			
Color	Gray (customization demand is available)				Green-yellow			
Slotted screwdriver size (Blade thickness x Width) mm	0.4x2.5				0.4x2.5			
Accessories								
Adjacent jumper (2P)	WFA1.5				/			
Alternate jumper (2P)	WFB1.5				/			
Staggered jumper (2P)	/				/			
End cover	D-WS1.5-TW				D-WS1.5-TW			
Marker (Top)	ZB4&WB4				ZB4&WB4			
Marker (Side)	DEK4				DEK4			
Warning cover	EEA1.5				EEA1.5			
DIN rail	NS35/7.5 & NS35/15 (Steel and Aluminium alloy are optional)				NS35/7.5 & NS35/15 (Steel and Aluminium alloy are optional)			
End stopper	E-WS&E-PC&E-MK				E-WS&E-PC&E-MK			

Spring-cage connection technology

Feed-through, multi-conductor and ground terminal blocks

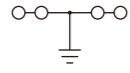
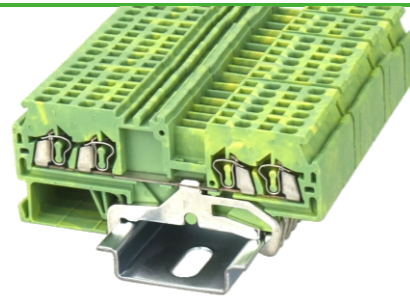

WS1.5-QU

WS1.5-QU-100A(H)

Notes: For additional accessories and operating instruction, see page 29.

CE ENEC RoHS REACH

CE ENEC RoHS REACH

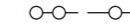
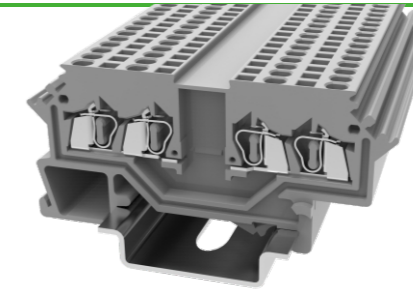
Dimension	CE ENEC RoHS REACH				CE ENEC RoHS REACH			
Width/Length/Height(NS35/7.5&NS35/15) mm	4/73/34.55(42.05)				4/68/34.55(42.05)			
Electrical Parameter	IEC IEC60947-7-1		UL UL1059		IEC IEC60947-7-1		UL UL1059	
Rated voltage V	800		600		800		600	
Rated current A	18		10		18		10	
Wire range mm ² /AWG	0.2-1.5		28-16		0.2-1.5		28-16	
Rated surge voltage/Degree of pollution KV/-	8/3				8/3			
Overvoltage category/Insulation material group -/-	III /I				III /I			
Connection capacity	Solid	Stranded	Ferrule (with and without plastic sleeve)		Solid	Stranded	Ferrule (with and without plastic sleeve)	
1 conductor mm ²	0.2-1.5	0.2-1.5	0.2-1.5	0.2-0.5	0.2-1.5	0.2-1.5	0.2-1.5	0.2-0.5
2 conductors with same cross section, stranded, TWIN ferrules with plastic sleeve mm ²	-	-	-	0.5	-	-	-	0.5
General information	PA/V0				PA/V0			
Insulation material/Flammability rating(according to UL 94)	PA/V0				PA/V0			
Operation temperature °C (°F)	-40(-40)~105(221)				-40(-40)~105(221)			
Stripping length mm	8-9				8-9			
Color	Gray (customization demand is available)				Gray (customization demand is available)			
Slotted screwdriver size (Blade thickness x Width) mm	0.4x2.5				0.4x2.5			
Accessories								
Adjacent jumper (2P)	WFA1.5				WFA1.5			
Alternate jumper (2P)	WFB1.5				WFB1.5			
Staggered jumper (2P)	/				/			
End cover	D-WS1.5-QU				D-WS1.5-QU			
Marker (Top)	ZB4&WB4				/			
Marker (Side)	DEK4				ZB4&WB4			
Warning cover	EEA1.5				EEA1.5			
DIN rail	NS35/7.5 & NS35/15 (Steel and Aluminium alloy are optional)				NS35/7.5 & NS35/15 (Steel and Aluminium alloy are optional)			
End stopper	E-WS&E-PC&E-MK				E-WS&E-PC&E-MK			

Spring-cage connection technology
Feed-through, multi-conductor and ground terminal blocks

WS1.5-QU-PE

Notes: For additional accessories and operating instruction, see page 29.

CE ENEC RoHS REACH

Dimension					
Width/Length/Height(NS35/7.5&NS35/15) mm		4/73/34.55(42.05)			
Electrical Parameter		IEC IEC60947-7-2	UL UL1059		
Rated voltage	V	/	/		
Rated current	A	/	/		
Wire range	mm ² /AWG	0.2-1.5	28-16		
Rated surge voltage/Degree of pollution	KV/-	8/3			
Overvoltage category/Insulation material group	-/-	III /I			
Connection capacity		Solid	Stranded	Ferrule (with and without plastic sleeve)	
1 conductor	mm ²	0.2-1.5	0.2-1.5	0.2-1.5	0.2-0.5
2 conductors with same cross section, stranded, TWIN ferrules with plastic sleeve	mm ²	—	—	—	0.5
General information					
Insulation material/Flammability rating(according to UL 94)		PA/V0			
Operation temperature	°C (°F)	-40(-40)~105(221)			
Stripping length	mm	8-9			
Color		Green-yellow			
Slotted screwdriver size (Blade thickness x Width) mm		0.4x2.5			
Accessories					
Adjacent jumper (2P)		/			
Alternate jumper (2P)		/			
Staggered jumper (2P)		/			
End cover		D-WS1.5-QU			
Marker (Top)		ZB4&WB4			
Marker (Side)		DEK4			
Warning cover		EEA1.5			
DIN rail		NS35/7.5 & NS35/15 (Steel and Aluminium alloy are optional)			
End stopper		E-WS&E-PC&E-MK			

Spring-cage connection technology
Component terminal blocks

WS1.5-QU-LD

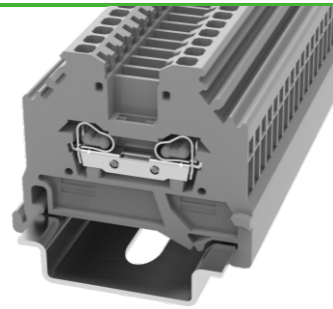
Notes: For additional accessories and operating instruction, see page 29.

CE ENEC RoHS REACH

Dimension					
Width/Length/Height(NS35/7.5&NS35/15) mm		4/68/34.55(42.05)			
Electrical Parameter		IEC IEC60947-7-1	UL UL1059		
Rated voltage	V	800	600		
Rated current	A	18	10		
Wire range	mm ² /AWG	0.2-1.5	28-16		
Rated surge voltage/Degree of pollution	KV/-	8/3			
Overvoltage category/Insulation material group	-/-	III /I			
Connection capacity		Solid	Stranded	Ferrule (with and without plastic sleeve)	
1 conductor	mm ²	0.2-1.5	0.2-1.5	0.2-1.5	0.2-0.5
2 conductors with same cross section, stranded, TWIN ferrules with plastic sleeve	mm ²	—	—	—	0.5
General information					
Insulation material/Flammability rating(according to UL 94)		PA/V0			
Operation temperature	°C (°F)	-40(-40)~105(221)			
Stripping length	mm	8-9			
Color		Gray (customization demand is available)			
Slotted screwdriver size (Blade thickness x Width) mm		0.4x2.5			
Accessories					
Adjacent jumper (2P)		/			
Alternate jumper (2P)		/			
Staggered jumper (2P)		/			
End cover		D-WS1.5-QU			
Marker (Top)		ZB4&WB4			
Marker (Side)		/			
Warning cover		EEA1.5			
DIN rail		NS35/7.5 & NS35/15 (Steel and Aluminium alloy are optional)			
End stopper		E-WS&E-PC&E-MK			

Spring-cage connection technology

Feed-through, multi-conductor and ground terminal blocks

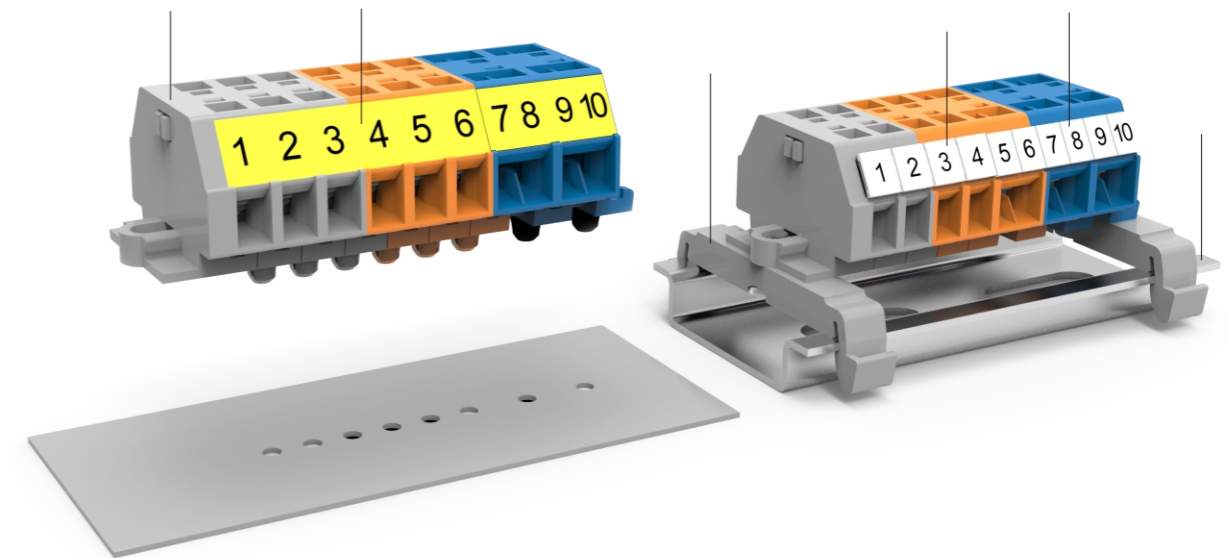


WS1.5-SD

Notes: For additional accessories and operating instruction, see page 29.

CE ENEC RoHS REACH

Dimension					
Width/Length/Height(NS35/7.5&NS35/15) mm		4/42.5/38(45.5)			
Electrical Parameter		IEC IEC60947-7-1	UL UL1059		
Rated voltage	V	800	600		
Rated current	A	18	10		
Wire range	mm ² /AWG	0.2-1.5	28-16		
Rated surge voltage/Degree of pollution	KV/-	8/3			
Overvoltage category/Insulation material group	-/-	III / I			
Connection capacity		Solid	Stranded	Ferrule (with and without plastic sleeve)	
1 conductor	mm ²	0.2-1.5	0.2-1.5	0.2-1.5	0.2-0.5
2 conductors with same cross section, stranded, TWIN ferrules with plastic sleeve	mm ²	—	—	—	0.5
General information					
Insulation material/Flammability rating(according to UL 94)		PA/V0			
Operation temperature	°C (°F)	-40(-40)~105(221)			
Stripping length	mm	8-9			
Color		Gray (customization demand is available)			
Slotted screwdriver size (Blade thickness x Width) mm		0.4x2.5			
Accessories					
Adjacent jumper (2P)		/			
Alternate jumper (2P)		/			
Staggered jumper (2P)		/			
End cover		D-WS1.5-SD			
Marker (Top)		/			
Marker (Side)		ZB4&WB4			
Warning cover		EEA1.5			
DIN rail		NS35/7.5 & NS35/15 (Steel and Aluminium alloy are optional)			
End stopper		E-WS&E-PC&E-MK			

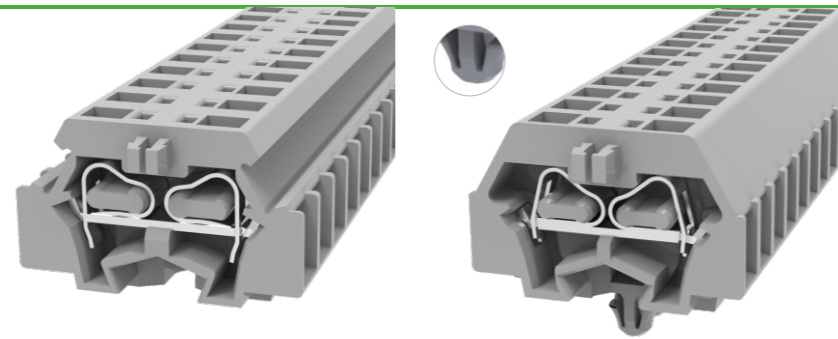


Description	Part No.	Remark
End cover	D-WS1.5-DB-01P-11-00A(H)	End cover is used for WS1.5-DB/WS1.5T-DB
Paper label	/	Marker is used for the side of WS1.5-DB-11A/WS1.5T-DB-11A
Mounting foot with screw	WHH-WS1.5-DB-01P-11-00A(H)	For DIN35, can be screwed on terminal blocks with mounting flange
Marker	DEK5-50P-19-00A(H)	Marker is used for the side of WS1.5-DB
Marker	DEK4-50P-19-00A(H)	Marker is used for the side of WS1.5T-DB
DIN rail	NS35/7.5-0150-00A(H)	NS35 DIN rail

Circuit diagram		
	○ Connection point for wiring	
	● Connection point for bridging	
	LED light connection	
	Disconnecting	
	Circuit connection point	

Spring-cage connection technology

Feed-through, multi-conductor and ground terminal blocks



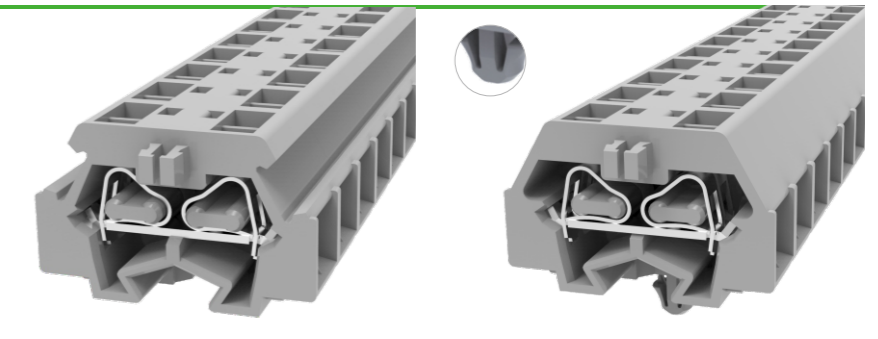
Notes: For additional accessories and operating instruction, see page 36.

WS1.5-DB
WS1.5-DB-11A(H)

Dimension									
Width/Length/Height	mm	5/25/17				5/21.5/17			
Electrical Parameter		IEC IEC60947-7-1		UL UL1059		IEC IEC60947-7-1		UL UL1059	
Rated voltage	V	800		300		800		300	
Rated current	A	17.5		10		17.5		10	
Wire range	mm ² /AWG	0.2-1.5		28-16		0.2-1.5		28-16	
Rated surge voltage/Degree of pollution	KV/-	8/3				8/3			
Overvoltage category/Insulation material group	-/-	III / I				III / I			
Connection capacity		Solid	Stranded	Ferrule (with and without plastic sleeve)		Solid	Stranded	Ferrule (with and without plastic sleeve)	
1 conductor	mm ²	0.2-1.5	0.2-1.5	0.2-1.5	0.2-1.0	0.2-1.5	0.2-1.5	0.2-1.5	0.2-1.0
2 conductors with same cross section, stranded, TWIN ferrules with plastic sleeve	mm ²	—	—	—	0.5	—	—	—	0.5
General information									
Insulation material/Flammability rating(according to UL 94)		PA/V0				PA/V0			
Operation temperature	°C (°F)	-40(-40)~105(221)				-40(-40)~105(221)			
Stripping length	mm	8-9				8-9			
Color		Gray (customization demand is available)				Gray (customization demand is available)			
Slotted screwdriver size (Blade thickness x Width)	mm	0.4x2.5				0.4x2.5			
Accessories									
Adjacent jumper (2P)		/				/			
End cover		D-WS1.5-DB				D-WS1.5-DB			
Marker (Side)		DEK5				/			
Warning cover		/				/			
DIN rail mounting adapter		WHH-WS1.5-DB				/			
DIN rail		NS35/7.5 & NS35/15 (Steel and Aluminium alloy are optional)				/			
End stopper		/				/			

Spring-cage connection technology

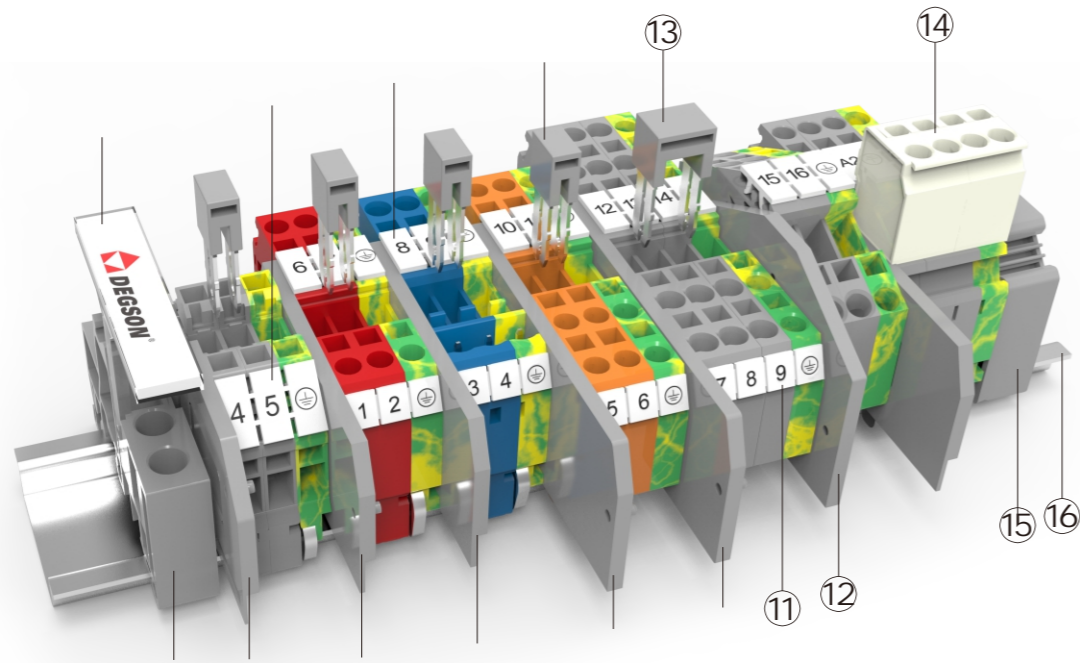
Feed-through, multi-conductor and ground terminal blocks



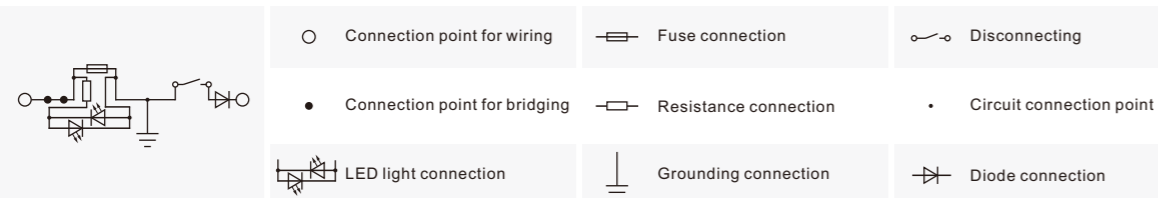
Notes: For additional accessories and operating instruction, see page 36.

WS1.5T-DB
WS1.5T-DB-11A(H)

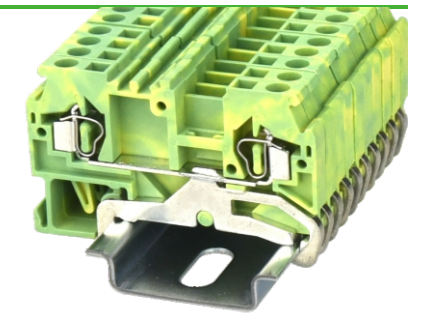
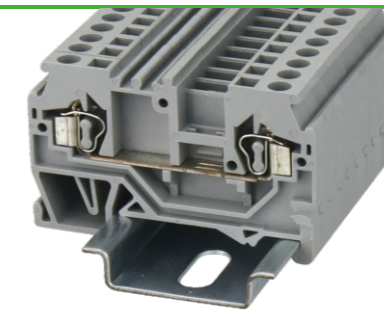
Dimension									
Width/Length/Height	mm	8/25/17				8/21.5/17			
Electrical Parameter		IEC IEC60947-7-1		UL UL1059		IEC IEC60947-7-1		UL UL1059	
Rated voltage	V	800		300		800		300	
Rated current	A	17.5		10		17.5		10	
Wire range	mm ² /AWG	0.2-1.5		28-16		0.2-1.5		28-16	
Rated surge voltage/Degree of pollution	KV/-	8/3				8/3			
Overvoltage category/Insulation material group	-/-	III / I				III / I			
Connection capacity		Solid	Stranded	Ferrule (with and without plastic sleeve)		Solid	Stranded	Ferrule (with and without plastic sleeve)	
1 conductor	mm ²	0.2-1.5	0.2-1.5	0.2-1.5	0.2-1	0.2-1.5	0.2-1.5	0.2-1.5	0.2-1
2 conductors with same cross section, stranded, TWIN ferrules with plastic sleeve	mm ²	—	—	—	0.5	—	—	—	0.5
General information									
Insulation material/Flammability rating(according to UL 94)		PA/V0				PA/V0			
Operation temperature	°C (°F)	-40(-40)~105(221)				-40(-40)~105(221)			
Stripping length	mm	8-9				8-9			
Color		Gray (customization demand is available)				Gray (customization demand is available)			
Slotted screwdriver size (Blade thickness x Width)	mm	0.4x2.5				0.4x2.5			
Accessories									
Adjacent jumper (2P)		/				/			
End cover		D-WS1.5-DB				D-WS1.5-DB			
Marker (Side)		DEK4				/			
Warning cover		/				/			
DIN rail mounting adapter		WHH-WS1.5-DB				/			
DIN rail		NS35/7.5 & NS35/15 (Steel and Aluminium alloy are optional)				/			
End stopper		/				/			



Description	Part No.	Remark
Terminal strip marker carrier	DLM2-01P-17-00A(H)	Suitable for E-PC, use for marking
End stopper	E-PC-01P-11-1000A(H)	Fixing products on NS35 DIN rail
End cover	D-WS2.5-SD-01P-11-00A(H)	End cover is used for WS2.5-SD&WS2.5-SD-PE
Marker	ZB5-10P-19-00A(H)	Marker is used for the side of WS2.5-SD series
End cover	D-WS2.5-01P-11-00A(H)	End cover is used for WS2.5&WS2.5-PE
End cover	D-WS2.5P-01P-11-00A(H)	End cover is used for WS2.5P&WS2.5P-PE
Marker	ZB5-10P-19-00A(H)	Marker is used for the top of WS2.5 series
End cover	D-WS2.5-TW-01P-11-00A(H)	End cover is used for WS2.5-TW&WS2.5-TW-PE
Adjacent jumper	WFA2.5-01P-11-00A(H)	02P bridge, use for WS2.5 series
End cover	D-WS2.5-QU-01P-11-00A(H)	End cover is used for WS2.5-QU&WS2.5-QU-PE
⑪ Marker	DEK5-50P-19-00A(H)	Marker is used for the side of WS2.5 series
⑫ End cover	D-WS2.5-TW-TA-01P-11-00A(H)	End cover is used for WS2.5-TW-TA&WS2.5-TW-TA-PE
⑬ Alternate jumper	WFB2.5-01P-11-00A(H)	02P bridge, use for WS2.5 series
⑭ Plug	8EDGK-5.0-04P-11-01A(H)	Mating with WS2.5P&WS2.5P-PE
⑮ End stopper	E-WS-01P-11-00A(H)	Fixing products on NS35 DIN rail
⑯ DIN rail	NS35/7.5-0150-00A(H)	NS35 DIN rail

Circuit diagram

Spring-cage connection technology

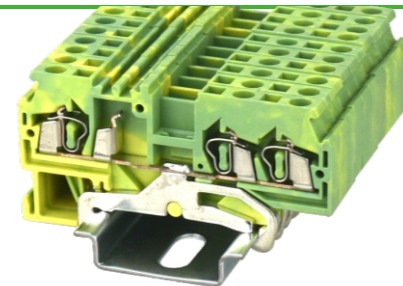
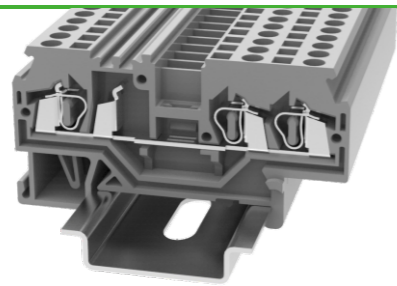
Feed-through, multi-conductor and ground terminal blocks


WS2.5

WS2.5-PE

Notes: For additional accessories and operating instruction, see page 39.

Dimension	5/53/35.45(42.95)			
Width/Length/Height(NS35/7.5&NS35/15) mm	5/53/35.45(42.95)			
Electrical Parameter	IEC IEC60947-7-1	UL UL1059	IEC IEC60947-7-2	UL UL1059
Rated voltage V	800	600	/	/
Rated current A	24	15	/	/
Wire range mm ² /AWG	0.2-2.5		28-14	
Rated surge voltage/Degree of pollution KV/-	8/3		8/3	
Overvoltage category/Insulation material group -/-	III /I		III /I	
Connection capacity	Solid	Stranded	Ferrule (with and without plastic sleeve)	
1 conductor mm ²	0.2-2.5	0.2-2.5	0.2-2.5	0.2-1.5
2 conductors with same cross section, stranded, TWIN ferrules with plastic sleeve mm ²	—	—	—	0.5
General information				
Insulation material/Flammability rating(according to UL 94)	PA/V0			
Operation temperature °C (°F)	-40(-40)~105(221)			
Stripping length mm	8-9			
Color	Gray (customization demand is available)			
Slotted screwdriver size (Blade thickness x Width) mm	0.5x3.5			
Accessories				
Adjacent jumper (2P)	WFA2.5		/	
Alternate jumper (2P)	WFB2.5		/	
Staggered jumper (2P)	WFC2.5-2 WFC2.5-6	WFC2.5-3 WFC2.5-7	WFC2.5-4 WFC2.5-8	WFC2.5-5
End cover	D-WS2.5		D-WS2.5	
Marker (Top)	ZB5&WB5		ZB5&WB5	
Marker (Side)	DEK5		DEK5	
Warning cover	EEA2.5		EEA2.5	
DIN rail	NS35/7.5 & NS35/15 (Steel and Aluminium alloy are optional)			
End stopper	E-WS&E-PC&E-MK		E-WS&E-PC&E-MK	

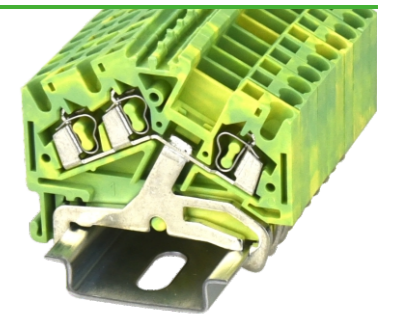
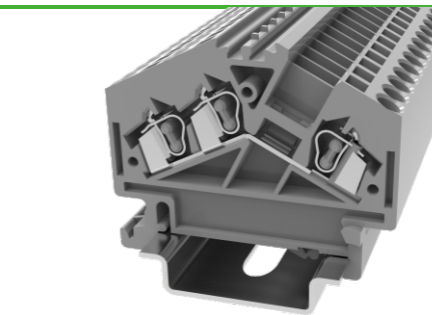
Spring-cage connection technology
Feed-through, multi-conductor and ground terminal blocks

WS2.5-TW
WS2.5-TW-PE

Notes: For additional accessories and operating instruction, see page 39.

CE ENE RoHS REACH

CE ENE RoHS REACH

Dimension		CE ENE RoHS REACH				CE ENE RoHS REACH			
Width/Length/Height(NS35/7.5&NS35/15) mm		5/64.2/35.45(42.95)				5/64.2/35.45(42.95)			
Electrical Parameter		IEC IEC60947-7-1		UL UL1059		IEC IEC60947-7-2		UL UL1059	
Rated voltage	V	800		600		/		/	
Rated current	A	24		15		/		/	
Wire range	mm ² /AWG	0.2-2.5		28-14		0.2-2.5		28-14	
Rated surge voltage/Degree of pollution	KV/-	8/3				8/3			
Overvoltage category/Insulation material group	-/-	III / I				III / I			
Connection capacity		Solid	Stranded	Ferrule (with and without plastic sleeve)		Solid	Stranded	Ferrule (with and without plastic sleeve)	
1 conductor	mm ²	0.2-2.5	0.2-2.5	0.2-2.5	0.2-1.5	0.2-2.5	0.2-2.5	0.2-2.5	0.2-1.5
2 conductors with same cross section, stranded, TWIN ferrules with plastic sleeve	mm ²	-	-	-	0.5	-	-	-	0.5
General information									
Insulation material/Flammability rating(according to UL 94)		PA/V0				PA/V0			
Operation temperature °C (°F)		-40(-40)~105(221)				-40(-40)~105(221)			
Stripping length mm		11-12				11-12			
Color		Gray (customization demand is available)				Green-yellow			
Slotted screwdriver size (Blade thickness x Width) mm		0.5x3.5				0.5x3.5			
Accessories									
Adjacent jumper (2P)		WFA2.5				/			
Alternate jumper (2P)		WFB2.5				/			
Staggered jumper (2P)		WFC2.5-2 WFC2.5-6	WFC2.5-3 WFC2.5-7	WFC2.5-4 WFC2.5-8	WFC2.5-5	/			
End cover		D-WS2.5-TW				D-WS2.5-TW			
Marker (Top)		ZB5&WB5				ZB5&WB5			
Marker (Side)		DEK5				DEK5			
Warning cover		EEA2.5				EEA2.5			
DIN rail		NS35/7.5 & NS35/15 (Steel and Aluminium alloy are optional)				NS35/7.5 & NS35/15 (Steel and Aluminium alloy are optional)			
End stopper		E-WS&E-PC&E-MK				E-WS&E-PC&E-MK			

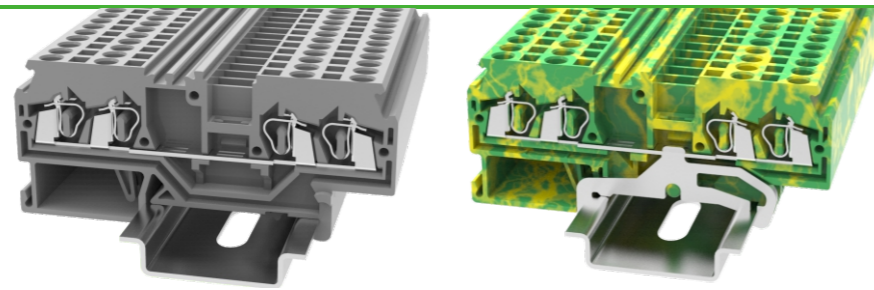
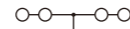
Spring-cage connection technology
Feed-through, multi-conductor and ground terminal blocks

WS2.5-TW-TA
WS2.5-TW-TA-PE

Notes: For additional accessories and operating instruction, see page 39.

CE ENE RoHS REACH

CE ENE RoHS REACH

Dimension		CE ENE RoHS REACH				CE ENE RoHS REACH			
Width/Length/Height(NS35/7.5&NS35/15) mm		5/50.5/43.65(51.15)				5/50.5/43.65(51.15)			
Electrical Parameter		IEC IEC60947-7-1		UL UL1059		IEC IEC60947-7-2		UL UL1059	
Rated voltage	V	800		600		/		/	
Rated current	A	24		15		/		/	
Wire range	mm ² /AWG	0.2-2.5		28-14		0.2-2.5		28-14	
Rated surge voltage/Degree of pollution	KV/-	8/3				8/3			
Overvoltage category/Insulation material group	-/-	III / I				III / I			
Connection capacity		Solid	Stranded	Ferrule (with and without plastic sleeve)		Solid	Stranded	Ferrule (with and without plastic sleeve)	
1 conductor	mm ²	0.2-2.5	0.2-2.5	0.2-2.5	0.2-1.5	0.2-2.5	0.2-2.5	0.2-2.5	0.2-1.5
2 conductors with same cross section, stranded, TWIN ferrules with plastic sleeve	mm ²	-	-	-	0.5	-	-	-	0.5
General information									
Insulation material/Flammability rating(according to UL 94)		PA/V0				PA/V0			
Operation temperature °C (°F)		-40(-40)~105(221)				-40(-40)~105(221)			
Stripping length mm		11-12				11-12			
Color		Gray (customization demand is available)				Green-yellow			
Slotted screwdriver size (Blade thickness x Width) mm		0.5x3.5				0.5x3.5			
Accessories									
Adjacent jumper (2P)		WFA2.5				/			
Alternate jumper (2P)		WFB2.5				/			
Staggered jumper (2P)		WFC2.5-2 WFC2.5-6	WFC2.5-3 WFC2.5-7	WFC2.5-4 WFC2.5-8	WFC2.5-5	/			
End cover		D-WS2.5-TW-TA				D-WS2.5-TW-TA			
Marker (Top)		ZB5&WB5				ZB5&WB5			
Marker (Side)		/				/			
Warning cover		EEA2.5				EEA2.5			
DIN rail		NS35/7.5 & NS35/15 (Steel and Aluminium alloy are optional)				NS35/7.5 & NS35/15 (Steel and Aluminium alloy are optional)			
End stopper		E-WS&E-PC&E-MK				E-WS&E-PC&E-MK			

Spring-cage connection technology
Feed-through, multi-conductor and ground terminal blocks

WS2.5-QU

WS2.5-QU-PE

Notes: For additional accessories and operating instruction, see page 39.

CE ENE RoHS REACH

CE ENE RoHS REACH

Dimension		CE ENE RoHS REACH				CE ENE RoHS REACH			
Width/Length/Height(NS35/7.5&NS35/15) mm		5/75.5/35.45(42.95)				5/75.5/35.45(42.95)			
Electrical Parameter		IEC IEC60947-7-1		UL UL1059		IEC IEC60947-7-2		UL UL1059	
Rated voltage	V	800		600		/		/	
Rated current	A	24		15		/		/	
Wire range	mm ² /AWG	0.2-2.5		28-14		0.2-2.5		28-14	
Rated surge voltage/Degree of pollution	KV/-	8/3				8/3			
Overvoltage category/Insulation material group	-/-	III / I				III / I			
Connection capacity		Solid	Stranded	Ferrule (with and without plastic sleeve)		Solid	Stranded	Ferrule (with and without plastic sleeve)	
1 conductor	mm ²	0.2-2.5	0.2-2.5	0.2-2.5	0.2-1.5	0.2-2.5	0.2-2.5	0.2-2.5	0.2-1.5
2 conductors with same cross section, stranded, TWIN ferrules with plastic sleeve	mm ²	-	-	-	0.5	-	-	-	0.5
General information									
Insulation material/Flammability rating(according to UL 94)		PA/V0				PA/V0			
Operation temperature °C (°F)		-40(-40)~105(221)				-40(-40)~105(221)			
Stripping length mm		11-12				11-12			
Color		Gray (customization demand is available)				Green-yellow			
Slotted screwdriver size (Blade thickness x Width) mm		0.5x3.5				0.5x3.5			
Accessories									
Adjacent jumper (2P)		WFA2.5				/			
Alternate jumper (2P)		WFB2.5				/			
Staggered jumper (2P)		WFC2.5-2 WFC2.5-6	WFC2.5-3 WFC2.5-7	WFC2.5-4 WFC2.5-8	WFC2.5-5	/			
End cover		D-WS2.5-QU				D-WS2.5-QU			
Marker (Top)		ZB5&WB5				ZB5&WB5			
Marker (Side)		DEK5				DEK5			
Warning cover		EEA2.5				EEA2.5			
DIN rail		NS35/7.5 & NS35/15 (Steel and Aluminium alloy are optional)				NS35/7.5 & NS35/15 (Steel and Aluminium alloy are optional)			
End stopper		E-WS&E-PC&E-MK				E-WS&E-PC&E-MK			

Spring-cage connection technology
Component terminal blocks

WS2.5-QU-LD-100A

WS2.5-QU-LD-104A

Notes: For additional accessories and operating instruction, see page 39.

CE ENE RoHS REACH

CE ENE RoHS REACH

Dimension		CE ENE RoHS REACH				CE ENE RoHS REACH			
Width/Length/Height(NS35/7.5&NS35/15) mm		5/75.5/35.45(42.95)				5/75.5/35.45(42.95)			
Electrical Parameter		IEC IEC60947-7-1		UL UL1059		IEC IEC60947-7-1		UL UL1059	
Rated voltage&Reverse voltage	V	250/1000		/		250/1000		/	
Rated current	A	0.5		/		0.5		/	
Wire range	mm ² /AWG	0.2-2.5		28-14		0.2-2.5		28-14	
Rated surge voltage/Degree of pollution	KV/-	8/3				8/3			
Overvoltage category/Insulation material group	-/-	III / I				III / I			
Connection capacity		Solid	Stranded	Ferrule (with and without plastic sleeve)		Solid	Stranded	Ferrule (with and without plastic sleeve)	
1 conductor	mm ²	0.2-2.5	0.2-2.5	0.2-2.5	0.2-1.5	0.2-2.5	0.2-2.5	0.2-2.5	0.2-1.5
2 conductors with same cross section, stranded, TWIN ferrules with plastic sleeve	mm ²	-	-	-	0.5	-	-	-	0.5
General information									
Insulation material/Flammability rating(according to UL 94)		PA/V0				PA/V0			
Operation temperature °C (°F)		-40(-40)~105(221)				-40(-40)~105(221)			
Stripping length mm		11-12				11-12			
Color		Gray (customization demand is available)				Gray (customization demand is available)			
Slotted screwdriver size (Blade thickness x Width) mm		0.5x3.5				0.5x3.5			
Accessories									
Adjacent jumper (2P)		/				/			
Alternate jumper (2P)		/				/			
Staggered jumper (2P)		/				/			
End cover		D-WS2.5-QU				D-WS2.5-QU			
Marker (Top)		ZB5&WB5				ZB5&WB5			
Marker (Side)		DEK5				DEK5			
Warning cover		EEA2.5				EEA2.5			
DIN rail		NS35/7.5 & NS35/15 (Steel and Aluminium alloy are optional)				NS35/7.5 & NS35/15 (Steel and Aluminium alloy are optional)			
End stopper		E-WS&E-PC&E-MK				E-WS&E-PC&E-MK			

Spring-cage connection technology

Feed-through, multi-conductor and ground terminal blocks


WS2.5-SD

WS2.5-SD-PE

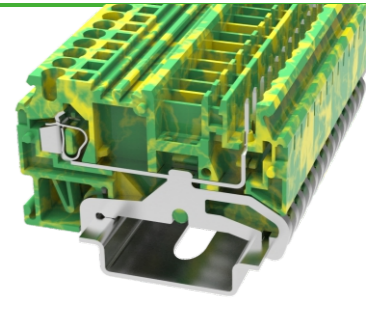
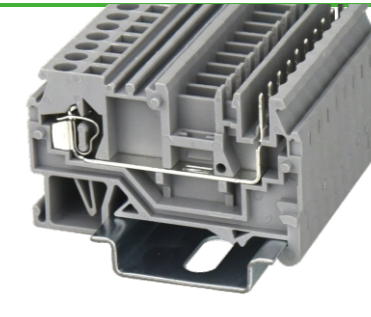
Notes: For additional accessories and operating instruction, see page 39.

CE ENEC RoHS REACH
CE ENEC RoHS REACH

Dimension		CE ENEC RoHS REACH				CE ENEC RoHS REACH			
Width/Length/Height(NS35/7.5&NS35/15) mm		5/42.5/38(45.5)				5/42.5/38(45.5)			
Electrical Parameter		IEC IEC60947-7-1		UL UL1059		IEC IEC60947-7-2		UL UL1059	
Rated voltage	V	800		600		/		/	
Rated current	A	24		15		/		/	
Wire range	mm ² /AWG	0.2-2.5		28-12		0.2-2.5		28-12	
Rated surge voltage/Degree of pollution	KV/-	8/3				8/3			
Overvoltage category/Insulation material group	-/-	III / I				III / I			
Connection capacity		Solid	Stranded	Ferrule (with and without plastic sleeve)		Solid	Stranded	Ferrule (with and without plastic sleeve)	
1 conductor	mm ²	0.2-2.5	0.2-2.5	0.2-2.5	0.2-1	0.2-2.5	0.2-2.5	0.2-2.5	0.2-1
2 conductors with same cross section, stranded, TWIN ferrules with plastic sleeve	mm ²	—	—	—	0.5	—	—	—	0.5
General information									
Insulation material/Flammability rating(according to UL 94)		PA/V0				PA/V0			
Operation temperature °C (°F)		-40(-40)~105(221)				-40(-40)~105(221)			
Stripping length mm		8-9				8-9			
Color		Gray (customization demand is available)				Green-yellow			
Slotted screwdriver size (Blade thickness x Width) mm		0.5x3.5				0.5x3.5			
Accessories									
Adjacent jumper (2P)		WFA2.5				/			
Alternate jumper (2P)		WFB2.5				/			
Staggered jumper (2P)		WFC2.5-2 WFC2.5-6	WFC2.5-3 WFC2.5-7	WFC2.5-4 WFC2.5-8	WFC2.5-5	/			
End cover		D-WS2.5-SD				D-WS2.5-SD			
Marker (Top)		/				/			
Marker (Side)		ZB5&WB5				ZB5&WB5			
Warning cover		EEA2.5				EEA2.5			
DIN rail		NS35/7.5 & NS35/15 (Steel and Aluminium alloy are optional)				NS35/7.5 & NS35/15 (Steel and Aluminium alloy are optional)			
End stopper		E-WS&E-PC&E-MK				E-WS&E-PC&E-MK			

Spring-cage connection technology

Plug-in connection and its ground terminal blocks

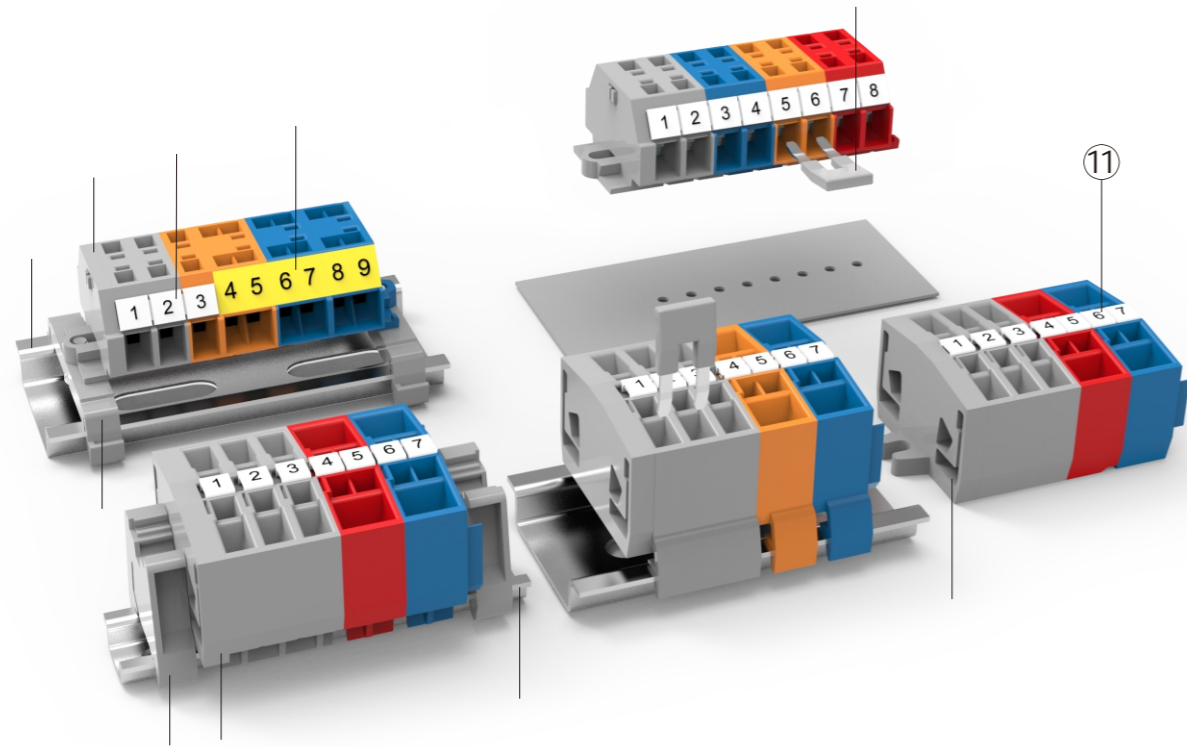

WS2.5P

WS2.5P-PE

Notes: For additional accessories and operating instruction, see page 39.

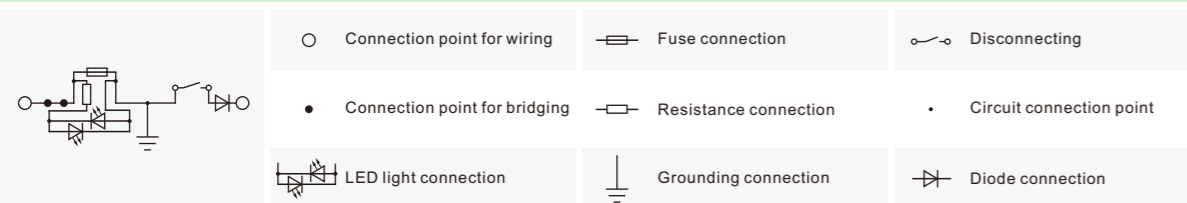
UL US CE ENEC RoHS REACH
UL US CE ENEC RoHS REACH

Dimension		UL US CE ENEC RoHS REACH				UL US CE ENEC RoHS REACH			
Width/Length/Height(NS35/7.5&NS35/15) mm		5/53/35.45(42.95)				5/53/35.45(42.95)			
Electrical Parameter		IEC IEC60947-7-1		UL UL1059		IEC IEC60947-7-2		UL UL1059	
Rated voltage	V	500		300		/		/	
Rated current	A	22		15		/		/	
Wire range	mm ² /AWG	0.2-2.5		28-14		0.2-2.5		28-14	
Rated surge voltage/Degree of pollution	KV/-	4/3				4/3			
Overvoltage category/Insulation material group	-/-	III / I				III / I			
Connection capacity		Solid	Stranded	Ferrule (with and without plastic sleeve)		Solid	Stranded	Ferrule (with and without plastic sleeve)	
1 conductor	mm ²	0.2-2.5	0.2-2.5	0.2-1.5	0.2-1.5	0.2-2.5	0.2-2.5	0.2-1.5	0.2-1.5
2 conductors with same cross section, stranded, TWIN ferrules with plastic sleeve	mm ²	—	—	—	0.5	—	—	—	0.5
General information									
Insulation material/Flammability rating(according to UL 94)		PA/V0				PA/V0			
Operation temperature °C (°F)		-40(-40)~105(221)				-40(-40)~105(221)			
Stripping length mm		9-10				9-10			
Color		Gray (customization demand is available)				Green-yellow			
Slotted screwdriver size (Blade thickness x Width) mm		0.5x3.5				0.5x3.5			
Accessories									
Adjacent jumper (2P)		WFA2.5				/			
Alternate jumper (2P)		WFB2.5				/			
Staggered jumper (2P)		WFC2.5-2 WFC2.5-6	WFC2.5-3 WFC2.5-7	WFC2.5-4 WFC2.5-8	WFC2.5-5	/			
End cover		D-WS2.5P				D-WS2.5P			
Marker (Top)		ZB4&WB5				ZB4&WB5			
Marker (Side)		DEK5				DEK5			
Warning cover		EEA2.5				EEA2.5			
DIN rail		NS35/7.5 & NS35/15 (Steel and Aluminium alloy are optional)				NS35/7.5 & NS35/15 (Steel and Aluminium alloy are optional)			
End stopper		E-WS&E-PC&E-MK				E-WS&E-PC&E-MK			



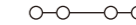
Description	Part No.	Remark
DIN rail	NS35/7.5-0070-00A(H)	NS35 DIN rail
Mounting foot with screw	WHH-WS1.5-DB-01P-11-00A(H)	For DIN35, can be screwed on terminal blocks with mounting flange
End cover	D-WS2.5-DB-01P-11-00A(H)	End cover is used for WS2.5-DB&WS2.5T-DB
Marker	DEK6-50P-19-00A(H)	Marker is used for the side of WS2.5-DB&WS2.5T-DB
Paper label	/	Paper label is used for the side of WS2.5-DB-11A&WS2.5T-DB-11A
End stopper	E-WS-DIN15-01P-11-00A(H)	Fixing products on NS15 DIN rail
End cover	D-WS2.5-MID-01P-11-00A(H)	End cover is used for WS2.5-DIN35&WS2.5T-DIN35
DIN rail	NS15-0070-00A(H)	NS15 DIN rail
Bridge	WFE-2.5-01P-11-00A(H)	Use for WS2.5-DB and WS2.5-DIN35&15 series
End cover	D-WS2.5-END-01P-11-00A(H)	End cover is used for WS2.5-END-CO&WS2.5T-END-CO
⑪ Marker	ZW5-40P-19-00A(H)	Marker is used for the top of WS2.5-MID-CO&WS2.5T-MID-CO

Circuit diagram



Spring-cage connection technology

Feed-through, multi-conductor and ground terminal blocks



WS2.5-DIN35

WS2.5T-DIN35

Notes: For additional accessories and operating instruction, see page 47.

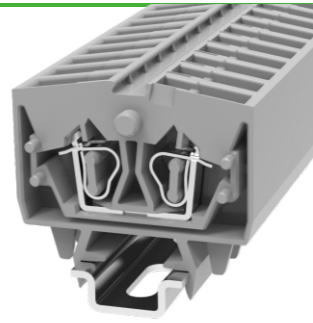
UL US CE ENE RoHS REACH

UL US CE ENE RoHS REACH

Dimension	WS2.5-DIN35				WS2.5T-DIN35			
Width/Length/Height(NS35/7.5&NS35/15) mm	6/32/31.88(39.38)				10/32/31.88(39.38)			
Electrical Parameter	IEC IEC60947-7-1	UL UL1059	IEC IEC60947-7-1	UL UL1059	IEC IEC60947-7-1	UL UL1059	IEC IEC60947-7-1	UL UL1059
Rated voltage V	800	600	800	600	800	600	800	600
Rated current A	24	20	24	20	24	20	24	20
Wire range mm ² /AWG	0.2-2.5		28-12		0.2-2.5		28-12	
Rated surge voltage/Degree of pollution KV/-	8/3				8/3			
Overvoltage category/Insulation material group -/-	III /I				III /I			
Connection capacity	Solid	Stranded	Ferrule (with and without plastic sleeve)		Solid	Stranded	Ferrule (with and without plastic sleeve)	
1 conductor mm ²	0.2-2.5	0.2-2.5	0.2-2.5	0.2-1	0.2-2.5	0.2-2.5	0.2-2.5	0.2-1
2 conductors with same cross section, stranded, TWIN ferrules with plastic sleeve mm ²	—	—	—	0.5	—	—	—	0.5
General information	PA/V0				PA/V0			
Insulation material/Flammability rating(according to UL 94)	PA/V0				PA/V0			
Operation temperature °C (°F)	-40(-40)~105(221)				-40(-40)~105(221)			
Stripping length mm	8-9				8-9			
Color	Gray (customization demand is available)				Gray (customization demand is available)			
Slotted screwdriver size (Blade thickness x Width) mm	0.5x3.5				0.5x3.5			
Accessories								
Adjacent jumper (2P)	WFE-2.5				/			
End cover	D-WS2.5-MID-CO				D-WS2.5-MID-CO			
Marker (Top)	ZW5				ZW5			
Marker (Side)	/				/			
Warning cover	/				/			
DIN rail	NS35/7.5 & NS35/15 (Steel and Aluminium alloy are optional)				NS35/7.5 & NS35/15 (Steel and Aluminium alloy are optional)			
End stopper	E-WS&E-PC&E-MK				E-WS&E-PC&E-MK			

Spring-cage connection technology

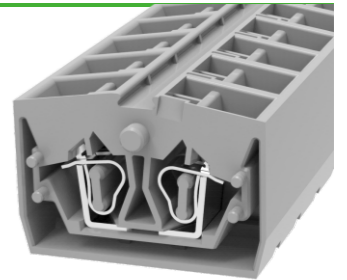
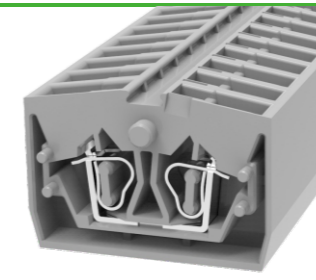
Feed-through, multi-conductor and ground terminal blocks


WS2.5-DIN15
WS2.5T-DIN15

Notes: For additional accessories and operating instruction, see page 47.

Spring-cage connection technology

Feed-through, multi-conductor and ground terminal blocks


WS2.5-MID-CO
WS2.5T-MID-CO

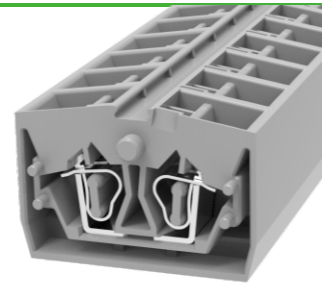
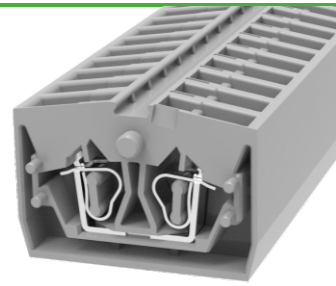
Notes: For additional accessories and operating instruction, see page 47.

Dimension											
Width/Length/Height(NS15)	mm	6/32/31.88						10/32/31.88			
Electrical Parameter		IEC IEC60947-7-1		UL UL1059		IEC IEC60947-7-1		UL UL1059			
Rated voltage	V	800		600		800		600			
Rated current	A	24		20		24		20			
Wire range	mm ² /AWG	0.2-2.5		28-12		0.2-2.5		28-12			
Rated surge voltage/Degree of pollution	KV/-	8/3				8/3					
Overvoltage category/Insulation material group	-/-	III / I				III / I					
Connection capacity		Solid	Stranded	Ferrule (with and without plastic sleeve)		Solid	Stranded	Ferrule (with and without plastic sleeve)			
1 conductor	mm ²	0.2-2.5	0.2-2.5	0.2-2.5	0.2-1	0.2-2.5	0.2-2.5	0.2-2.5	0.2-1		
2 conductors with same cross section, stranded, TWIN ferrules with plastic sleeve	mm ²	—	—	—	0.5	—	—	—	0.5		
General information											
Insulation material/Flammability rating(according to UL 94)		PA/V0				PA/V0					
Operation temperature	°C (°F)	-40(-40)~105(221)				-40(-40)~105(221)					
Stripping length	mm	8-9				8-9					
Color		Gray (customization demand is available)				Gray (customization demand is available)					
Slotted screwdriver size (Blade thickness x Width)	mm	0.5x3.5				0.5x3.5					
Accessories											
Adjacent jumper (2P)		WFE-2.5				/					
End cover		D-WS2.5-MID-CO				D-WS2.5-MID-CO					
Marker (Top)		ZW5				ZW5					
Marker (Side)		/				/					
Warning cover		/				/					
DIN rail		NS15				NS15					
End stopper		E-WS-DIN15&E-PC-DIN15				E-WS-DIN15&E-PC-DIN15					

Dimension											
Width/Length/Height	mm	6/32/22						10/32/22			
Electrical Parameter		IEC IEC60947-7-1		UL UL1059		IEC IEC60947-7-1		UL UL1059			
Rated voltage	V	800		600		800		600			
Rated current	A	24		20		24		20			
Wire range	mm ² /AWG	0.2-2.5		28-12		0.2-2.5		28-12			
Rated surge voltage/Degree of pollution	KV/-	8/3				8/3					
Overvoltage category/Insulation material group	-/-	III / I				III / I					
Connection capacity		Solid	Stranded	Ferrule (with and without plastic sleeve)		Solid	Stranded	Ferrule (with and without plastic sleeve)			
1 conductor	mm ²	0.2-2.5	0.2-2.5	0.2-2.5	0.2-1	0.2-2.5	0.2-2.5	0.2-2.5	0.2-1		
2 conductors with same cross section, stranded, TWIN ferrules with plastic sleeve	mm ²	—	—	—	0.5	—	—	—	0.5		
General information											
Insulation material/Flammability rating(according to UL 94)		PA/V0				PA/V0					
Operation temperature	°C (°F)	-40(-40)~105(221)				-40(-40)~105(221)					
Stripping length	mm	8-9				8-9					
Color		Gray (customization demand is available)				Gray (customization demand is available)					
Slotted screwdriver size (Blade thickness x Width)	mm	0.5x3.5				0.5x3.5					
Accessories											
Adjacent jumper (2P)		WFE-2.5				/					
Alternate jumper (2P)		/				/					
Staggered jumper (2P)		/				/					
End cover		D-WS2.5-MID-CO				D-WS2.5-MID-CO					
Marker (Top)		ZW5				ZW5					
Marker (Side)		/				/					
Warning cover		/				/					
DIN rail		/				/					
End stopper		/				/					

Spring-cage connection technology

Feed-through, multi-conductor and ground terminal blocks

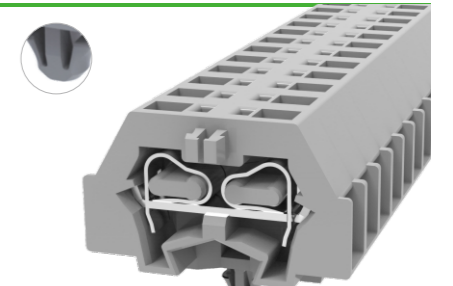
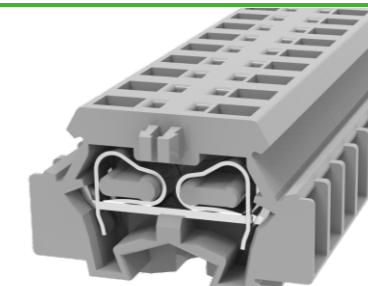

WS2.5-END-CO
WS2.5T-END-CO

Notes: For additional accessories and operating instruction, see page 47.

Dimension									
Width/Length/Height	mm	6/32/22				10/32/22			
Electrical Parameter		IEC IEC60947-7-1		UL UL1059		IEC IEC60947-7-1		UL UL1059	
Rated voltage	V	800		600		800		600	
Rated current	A	24		20		24		20	
Wire range	mm ² /AWG	0.2-2.5		28-12		0.2-2.5		28-12	
Rated surge voltage/Degree of pollution	KV/-	8/3				8/3			
Overvoltage category/Insulation material group	-/-	III / I				III / I			
Connection capacity		Solid	Stranded	Ferrule (with and without plastic sleeve)		Solid	Stranded	Ferrule (with and without plastic sleeve)	
1 conductor	mm ²	0.2-2.5	0.2-2.5	0.2-2.5	0.2-1	0.2-2.5	0.2-2.5	0.2-2.5	0.2-1
2 conductors with same cross section, stranded, TWIN ferrules with plastic sleeve	mm ²	—	—	—	0.5	—	—	—	0.5
General information									
Insulation material/Flammability rating(according to UL 94)		PA/V0				PA/V0			
Operation temperature	°C (°F)	-40(-40)~105(221)				-40(-40)~105(221)			
Stripping length	mm	8-9				8-9			
Color		Gray (customization demand is available)				Gray (customization demand is available)			
Slotted screwdriver size (Blade thickness x Width)	mm	0.5x3.5				0.5x3.5			
Accessories									
Adjacent jumper (2P)		WFE-2.5				/			
Alternate jumper (2P)		/				/			
Staggered jumper (2P)		/				/			
End cover		D-WS2.5-END-CO				D-WS2.5-END-CO			
Marker (Top)		ZW5				ZW5			
Marker (Side)		/				/			
Warning cover		/				/			
DIN rail		/				/			
End stopper		/				/			

Spring-cage connection technology

Feed-through, multi-conductor and ground terminal blocks

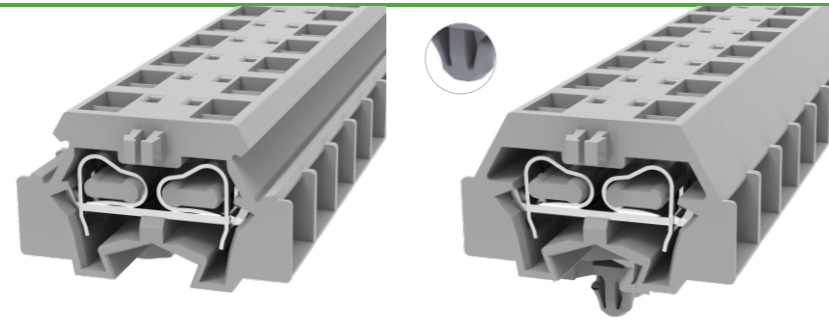

WS2.5-DB
WS2.5-DB-11A(H)

Notes: For additional accessories and operating instruction, see page 47.

Dimension									
Width/Length/Height	mm	6/28/18				6/28/18			
Electrical Parameter		IEC IEC60947-7-1		UL UL1059		IEC IEC60947-7-1		UL UL1059	
Rated voltage	V	800		300		800		300	
Rated current	A	24		15		24		15	
Wire range	mm ² /AWG	0.2-2.5		28-14		0.2-2.5		28-14	
Rated surge voltage/Degree of pollution	KV/-	8/3				8/3			
Overvoltage category/Insulation material group	-/-	III / I				III / I			
Connection capacity		Solid	Stranded	Ferrule (with and without plastic sleeve)		Solid	Stranded	Ferrule (with and without plastic sleeve)	
1 conductor	mm ²	0.2-2.5	0.2-2.5	0.2-2.5	0.2-1	0.2-2.5	0.2-2.5	0.2-2.5	0.2-1
2 conductors with same cross section, stranded, TWIN ferrules with plastic sleeve	mm ²	—	—	—	0.5	—	—	—	0.5
General information									
Insulation material/Flammability rating(according to UL 94)		PA/V0				PA/V0			
Operation temperature	°C (°F)	-40(-40)~105(221)				-40(-40)~105(221)			
Stripping length	mm	8-9				8-9			
Color		Gray (customization demand is available)				Gray (customization demand is available)			
Slotted screwdriver size (Blade thickness x Width)	mm	0.5x3.5				0.5x3.5			
Accessories									
Adjacent jumper (2P)		WFE-2.5				WFE-2.5			
End cover		D-WS2.5-DB				D-WS2.5-DB			
Marker (Side)		DEK6				/			
Warning cover		/				/			
DIN rail mounting adapter		WHH-WS1.5-DB				/			
DIN rail		NS35/7.5 & NS35/15 (Steel and Aluminium alloy are optional)				/			
End stopper		/				/			

Spring-cage connection technology

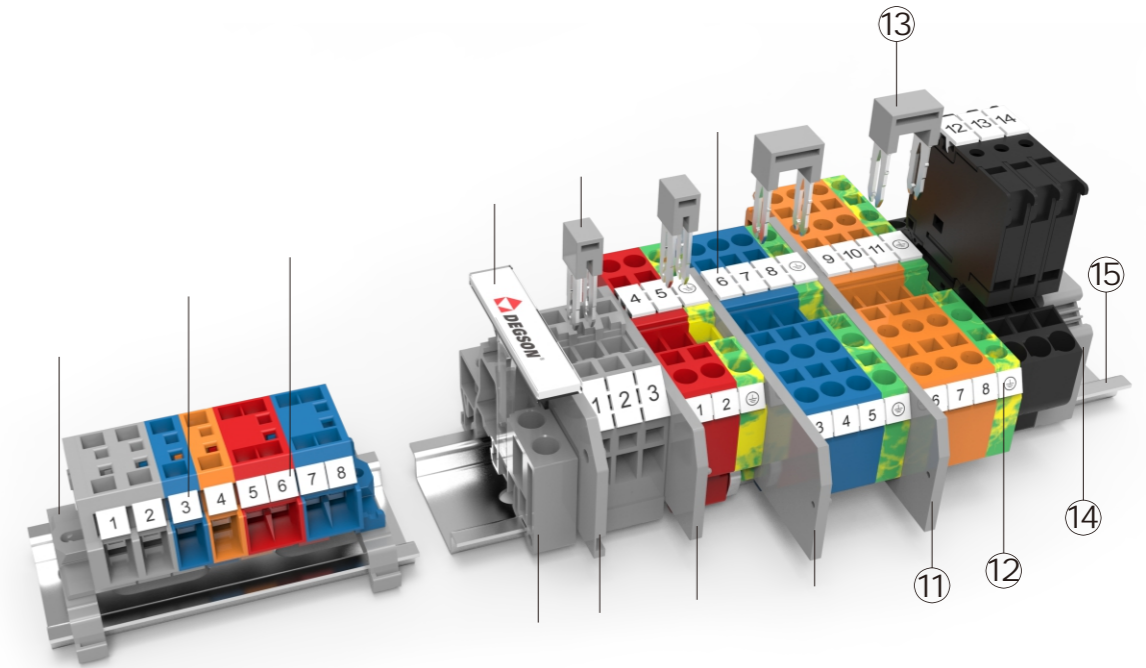
Feed-through, multi-conductor and ground terminal blocks


WS2.5T-DB

WS2.5T-DB-11A(H)


Notes: For additional accessories and operating instruction, see page 47.

Dimension		WS2.5T-DB				WS2.5T-DB-11A(H)			
Width/Length/Height	mm	10/28/18				10/28/18			
Electrical Parameter		IEC IEC60947-7-1		UL UL1059		IEC IEC60947-7-1		UL UL1059	
Rated voltage	V	800		300		800		300	
Rated current	A	24		15		24		15	
Wire range	mm ² /AWG	0.2-2.5		28-14		0.2-2.5		28-14	
Rated surge voltage/Degree of pollution	KV/-	8/3				8/3			
Overtoltage category/Insulation material group	-/-	III /I				III /I			
Connection capacity		Solid	Stranded	Ferrule (with and without plastic sleeve)		Solid	Stranded	Ferrule (with and without plastic sleeve)	
1 conductor	mm ²	0.2-2.5	0.2-2.5	0.2-2.5	0.2-1	0.2-2.5	0.2-2.5	0.2-2.5	0.2-1
2 conductors with same cross section, stranded, TWIN ferrules with plastic sleeve	mm ²	-	-	-	0.5	-	-	-	0.5
General information									
Insulation material/Flammability rating(according to UL 94)		PA/V0				PA/V0			
Operation temperature	°C (°F)	-40(-40)~105(221)				-40(-40)~105(221)			
Stripping length	mm	8-9				8-9			
Color		Gray (customization demand is available)				Gray (customization demand is available)			
Slotted screwdriver size (Blade thickness x Width)	mm	0.5x3.5				0.5x3.5			
Accessories									
Adjacent jumper (2P)		/				/			
End cover		D-WS2.5-DB				D-WS2.5-DB			
Marker (Side)		DEK5				/			
Warning cover		/				/			
DIN rail mounting adapter		WHH-WS1.5-DB				/			
DIN rail		NS35/7.5 & NS35/15 (Steel and Aluminium alloy are optional)				/			
End stopper		/				/			



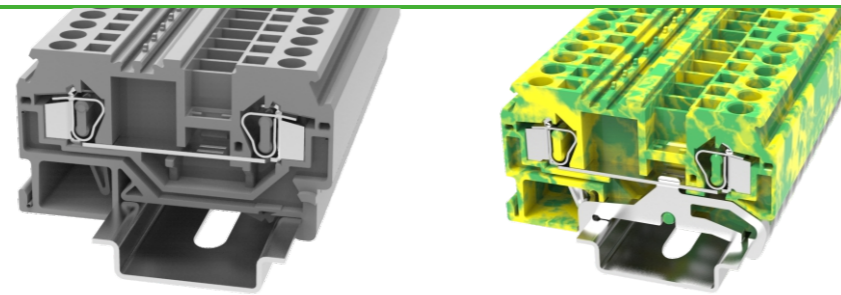
Description	Part No.	Remark
Mounting foot with screw	WHH-WS1.5-DB-01P-11-00A(H)	For DIN35, can be screwed on terminal blocks with mounting flange
Marker	DEK6-50P-19-00A(H)	Marker is used for the side of WS4-DB series
Marker	DEK6-50P-19-00A(H)	Marker is used for the side of WS4T-DB series
Terminal strip marker carrier	DLM2-01P-17-00A(H)	Suitable for E-PC, use for marking
End stopper	E-PC-01P-11-1000A(H)	Fixing products on NS35 DIN rail
End cover	D-WS4-SD-01P-11-00A(H)	End cover is used for WS4-SD
Adjacent jumper	WFA4-01P-11-00A(H)	02P bridge, use for WS4 series
End cover	D-WS4-01P-11-00A(H)	End cover is used for WS4&WS4-PE
End cover	D-WS4-TW-01P-11-00A(H)	End cover is used for WS4-TW&WS4-TW-PE
Marker	ZB6-10P-19-00A(H)	Marker is used for the top of WS4 series
⑪ End cover	D-WS4-QU-01P-11-00A(H)	End cover is used for WS4-QU&WS4-QU-PE
⑫ Marker	DEK6-50P-19-00A(H)	Marker is used for the side of WS4 series
⑬ Alternate jumper	WFB4-01P-11-00A(H)	02P bridge, use for WS4 series
⑭ End stopper	E-WS-01P-11-00A(H)	Fixing products on NS35 DIN rail
⑮ DIN rail	NS35/7.5-0150-00A(H)	NS35 DIN rail

Circuit diagram

	○ Connection point for wiring		⊞ Fuse connection		⊞ Disconnecting
	● Connection point for bridging		⊞ Resistance connection		● Circuit connection point
	⊞ LED light connection		⊞ Grounding connection		⊞ Diode connection

Spring-cage connection technology

Feed-through, multi-conductor and ground terminal blocks


WS4

WS4-PE

Notes: For additional accessories and operating instruction, see page 54.

UL US CE ENE RoHS REACH

UL US CE ENE RoHS REACH

Dimension	UL US CE ENE RoHS REACH				UL US CE ENE RoHS REACH			
Width/Length/Height(NS35/7.5&NS35/15) mm	6/60.4/36.45(43.95)				6/60.4/36.45(43.95)			
Electrical Parameter	IEC IEC60947-7-1		UL UL1059		IEC IEC60947-7-2		UL UL1059	
Rated voltage V	800		600		/		/	
Rated current A	32		20		/		/	
Wire range mm ² /AWG	0.2-4		28-12		0.2-4		28-12	
Rated surge voltage/Degree of pollution KV/-	8/3				8/3			
Overtoltage category/Insulation material group -/-	III / I				III / I			
Connection capacity	Solid	Stranded	Ferrule (with and without plastic sleeve)		Solid	Stranded	Ferrule (with and without plastic sleeve)	
1 conductor mm ²	0.2-4	0.2-4	0.2-2.5	0.2-2.5	0.2-4	0.2-4	0.2-2.5	0.2-2.5
2 conductors with same cross section, stranded, TWIN ferrules with plastic sleeve mm ²	—	—	—	0.5-1	—	—	—	0.5-1
General information								
Insulation material/Flammability rating(according to UL 94)	PA/V0				PA/V0			
Operation temperature °C (°F)	-40(-40)~105(221)				-40(-40)~105(221)			
Stripping length mm	13-14				13-14			
Color	Gray (customization demand is available)				Green-yellow			
Slotted screwdriver size (Blade thickness x Width) mm	0.5x3.5				0.5x3.5			
Accessories								
Adjacent jumper (2P)	WFA4				/			
Alternate jumper (2P)	WFB4				/			
Staggered jumper (2P)	/				/			
End cover	D-WS4				D-WS4			
Marker (Top)	ZB6				ZB6			
Marker (Side)	DEK6				DEK6			
Warning cover	EEA4				EEA4			
DIN rail	NS35/7.5 & NS35/15 (Steel and Aluminium alloy are optional)				NS35/7.5 & NS35/15 (Steel and Aluminium alloy are optional)			
End stopper	E-WS&E-PC&E-MK				E-WS&E-PC&E-MK			

Spring-cage connection technology

Feed-through, multi-conductor and ground terminal blocks


WS4-TW

WS4-TW-PE

Notes: For additional accessories and operating instruction, see page 54.

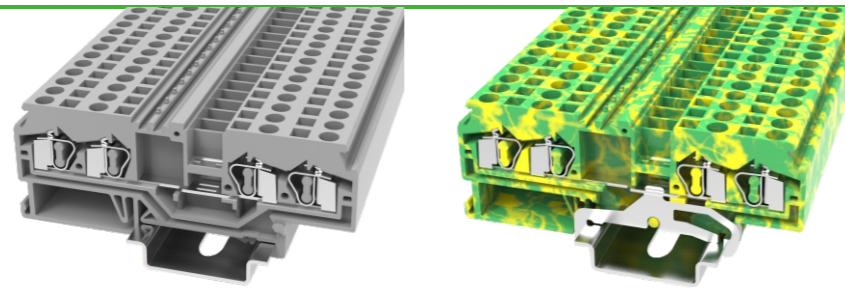
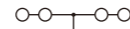
UL US CE ENE RoHS REACH

UL US CE ENE RoHS REACH

Dimension	UL US CE ENE RoHS REACH				UL US CE ENE RoHS REACH			
Width/Length/Height(NS35/7.5&NS35/15) mm	6/73.5/36.45(43.95)				6/73.5/36.45(43.95)			
Electrical Parameter	IEC IEC60947-7-1		UL UL1059		IEC IEC60947-7-2		UL UL1059	
Rated voltage V	800		600		/		/	
Rated current A	32		20		/		/	
Wire range mm ² /AWG	0.2-4		28-12		0.2-4		28-12	
Rated surge voltage/Degree of pollution KV/-	8/3				8/3			
Overtoltage category/Insulation material group -/-	III / I				III / I			
Connection capacity	Solid	Stranded	Ferrule (with and without plastic sleeve)		Solid	Stranded	Ferrule (with and without plastic sleeve)	
1 conductor mm ²	0.2-4	0.2-4	0.2-2.5	0.2-2.5	0.2-4	0.2-4	0.2-2.5	0.2-2.5
2 conductors with same cross section, stranded, TWIN ferrules with plastic sleeve mm ²	—	—	—	0.5-1	—	—	—	0.5-1
General information								
Insulation material/Flammability rating(according to UL 94)	PA/V0				PA/V0			
Operation temperature °C (°F)	-40(-40)~105(221)				-40(-40)~105(221)			
Stripping length mm	10-12				10-12			
Color	Gray (customization demand is available)				Green-yellow			
Slotted screwdriver size (Blade thickness x Width) mm	0.5x3.5				0.5x3.5			
Accessories								
Adjacent jumper (2P)	WFA4				/			
Alternate jumper (2P)	WFB4				/			
Staggered jumper (2P)	/				/			
End cover	D-WS4-TW				D-WS4-TW			
Marker (Top)	ZB6				ZB6			
Marker (Side)	DEK6				DEK6			
Warning cover	EEA4				EEA4			
DIN rail	NS35/7.5 & NS35/15 (Steel and Aluminium alloy are optional)				NS35/7.5 & NS35/15 (Steel and Aluminium alloy are optional)			
End stopper	E-WS&E-PC&E-MK				E-WS&E-PC&E-MK			

Spring-cage connection technology

Feed-through, multi-conductor and ground terminal blocks


WS4-QU

WS4-QU-PE

Notes: For additional accessories and operating instruction, see page 54.

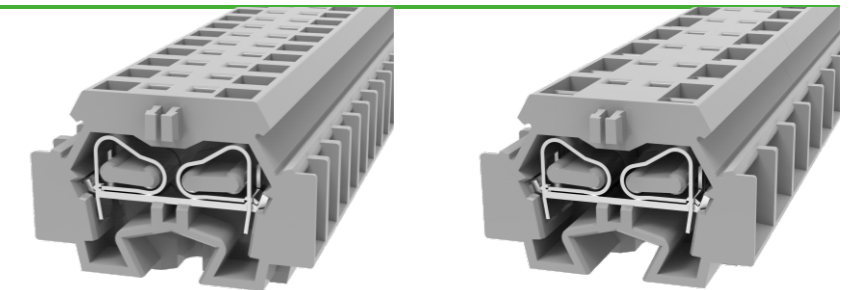
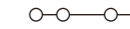
CE ENEC RoHS REACH

CE ENEC RoHS REACH

Dimension	CE ENEC RoHS REACH				CE ENEC RoHS REACH			
Width/Length/Height(NS35/7.5&NS35/15) mm	6/86.2/36.45(43.95)				6/86.2/36.45(43.95)			
Electrical Parameter	IEC IEC60947-7-1		UL UL1059		IEC IEC60947-7-2		UL UL1059	
Rated voltage V	800		600		/		/	
Rated current A	32		20		/		/	
Wire range mm ² /AWG	0.2-4		28-12		0.2-4		28-12	
Rated surge voltage/Degree of pollution KV/-	8/3				8/3			
Overtoltage category/Insulation material group -/-	III / I				III / I			
Connection capacity	Solid	Stranded	Ferrule (with and without plastic sleeve)		Solid	Stranded	Ferrule (with and without plastic sleeve)	
1 conductor mm ²	0.2-4	0.2-4	0.2-2.5	0.2-2.5	0.2-4	0.2-4	0.2-2.5	0.2-2.5
2 conductors with same cross section, stranded, TWIN ferrules with plastic sleeve mm ²	—	—	—	0.5-1	—	—	—	0.5-1
General information								
Insulation material/Flammability rating(according to UL 94)	PA/V0				PA/V0			
Operation temperature °C (°F)	-40(-40)~105(221)				-40(-40)~105(221)			
Stripping length mm	11-12				11-12			
Color	Gray (customization demand is available)				Green-yellow			
Slotted screwdriver size (Blade thickness x Width) mm	0.5x3.5				0.5x3.5			
Accessories								
Adjacent jumper (2P)	WFA4				/			
Alternate jumper (2P)	WFB4				/			
Staggered jumper (2P)	/				/			
End cover	D-WS4-QU				D-WS4-QU			
Marker (Top)	ZB6				ZB6			
Marker (Side)	DEK6				DEK6			
Warning cover	EEA4				EEA4			
DIN rail	NS35/7.5 & NS35/15 (Steel and Aluminium alloy are optional)				NS35/7.5 & NS35/15 (Steel and Aluminium alloy are optional)			
End stopper	E-WS&E-PC&E-MK				E-WS&E-PC&E-MK			

Spring-cage connection technology

Feed-through, multi-conductor and ground terminal blocks


WS4-DB

WS4T-DB

Notes: For additional accessories and operating instruction, see page 54.

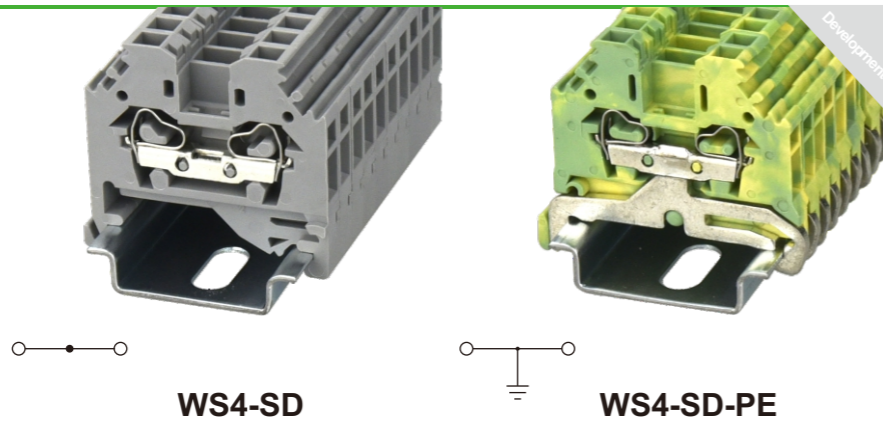
CE ENEC RoHS REACH

CE ENEC RoHS REACH

Dimension	CE ENEC RoHS REACH				CE ENEC RoHS REACH			
Width/Length/Height mm	7/33.4/23				12/33.4/23			
Electrical Parameter	IEC IEC60947-7-1		UL UL1059		IEC IEC60947-7-1		UL UL1059	
Rated voltage V	630		300		800		300	
Rated current A	32		20		32		20	
Wire range mm ² /AWG	0.2-4		28-12		0.2-4		28-12	
Rated surge voltage/Degree of pollution KV/-	8/3				8/3			
Overtoltage category/Insulation material group -/-	III / I				III / I			
Connection capacity	Solid	Stranded	Ferrule (with and without plastic sleeve)		Solid	Stranded	Ferrule (with and without plastic sleeve)	
1 conductor mm ²	0.2-4	0.2-4	0.2-2.5	0.2-2.5	0.2-4	0.2-4	0.2-2.5	0.2-2.5
2 conductors with same cross section, stranded, TWIN ferrules with plastic sleeve mm ²	—	—	—	0.5-1	—	—	—	0.5-1
General information								
Insulation material/Flammability rating(according to UL 94)	PA/V0				PA/V0			
Operation temperature °C (°F)	-40(-40)~105(221)				-40(-40)~105(221)			
Stripping length mm	10-11				10-11			
Color	Gray (customization demand is available)				Gray (customization demand is available)			
Slotted screwdriver size (Blade thickness x Width) mm	0.5x3.5				0.5x3.5			
Accessories								
Adjacent jumper (2P)	/				/			
End cover	D-WS4-DB				D-WS4-DB			
Marker (Side)	DEK6				DEK6			
Warning cover	/				/			
DIN rail mounting adapter	WHH-WS1.5-DB				WHH-WS1.5-DB			
DIN rail	NS35/7.5 & NS35/15 (Steel and Aluminium alloy are optional)				NS35/7.5 & NS35/15 (Steel and Aluminium alloy are optional)			
End stopper	/				/			

Spring-cage connection technology

Feed-through, multi-conductor and ground terminal blocks


WS4-SD

WS4-SD-PE

Notes: For additional accessories and operating instruction, see page 54.

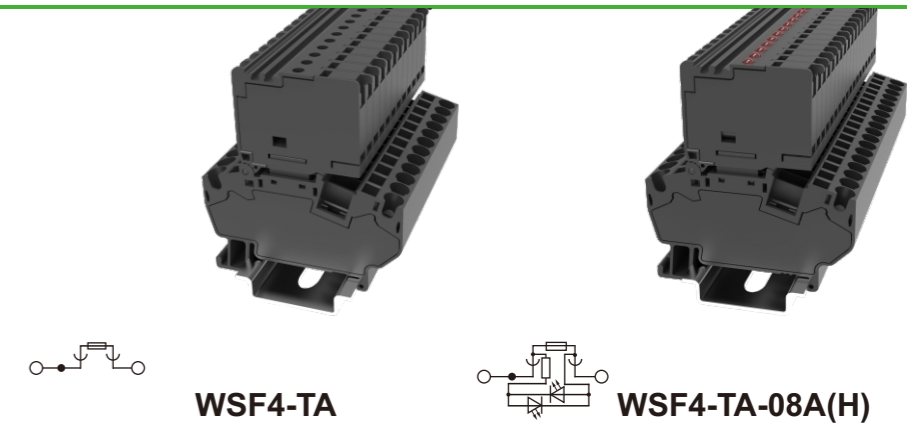
UL US CE ENEC RoHS REACH

CE ENEC RoHS REACH

Dimension	UL US CE ENEC RoHS REACH				CE ENEC RoHS REACH			
Width/Length/Height(NS35/7.5&NS35/15) mm	6/41.8/40(47.5)				6/41.8/40(47.5)			
Electrical Parameter	IEC IEC60947-7-1		UL UL1059		IEC IEC60947-7-2		UL UL1059	
Rated voltage V	800		600		/		/	
Rated current A	32		20		/		/	
Wire range mm ² /AWG	0.2-4		28-12		0.2-4		28-12	
Rated surge voltage/Degree of pollution KV/-	8/3				8/3			
Overvoltage category/Insulation material group -/-	III /I				III /I			
Connection capacity	Solid	Stranded	Ferrule (with and without plastic sleeve)		Solid	Stranded	Ferrule (with and without plastic sleeve)	
1 conductor mm ²	0.2-4	0.2-4	0.2-2.5	0.2-2.5	0.2-4	0.2-4	0.2-2.5	0.2-2.5
2 conductors with same cross section, stranded, TWIN ferrules with plastic sleeve mm ²	—	—	—	0.5-1	—	—	—	0.5-1
General information	PA/V0				PA/V0			
Insulation material/Flammability rating(according to UL 94)	-40(-40)~105(221)				-40(-40)~105(221)			
Operation temperature °C (°F)	11-12				11-12			
Stripping length mm	Gray (customization demand is available)				Green-yellow			
Color	0.5x3.5				0.5x3.5			
Slotted screwdriver size (Blade thickness x Width) mm	Accessories				Accessories			
Adjacent jumper (2P)	WFA4				/			
Alternate jumper (2P)	WFB4				WFB4			
Staggered jumper (2P)	/				/			
End cover	D-WS4-SD				D-WS4-SD			
Marker (Top)	/				/			
Marker (Side)	ZB6				ZB6			
Warning cover	EEA4				EEA4			
DIN rail	NS35/7.5 & NS35/15 (Steel and Aluminium alloy are optional)				NS35/7.5 & NS35/15 (Steel and Aluminium alloy are optional)			
End stopper	E-WS&E-PC&E-MK				E-WS&E-PC&E-MK			

Spring-cage connection technology

Fuse terminal blocks(5X20)


WSF4-TA

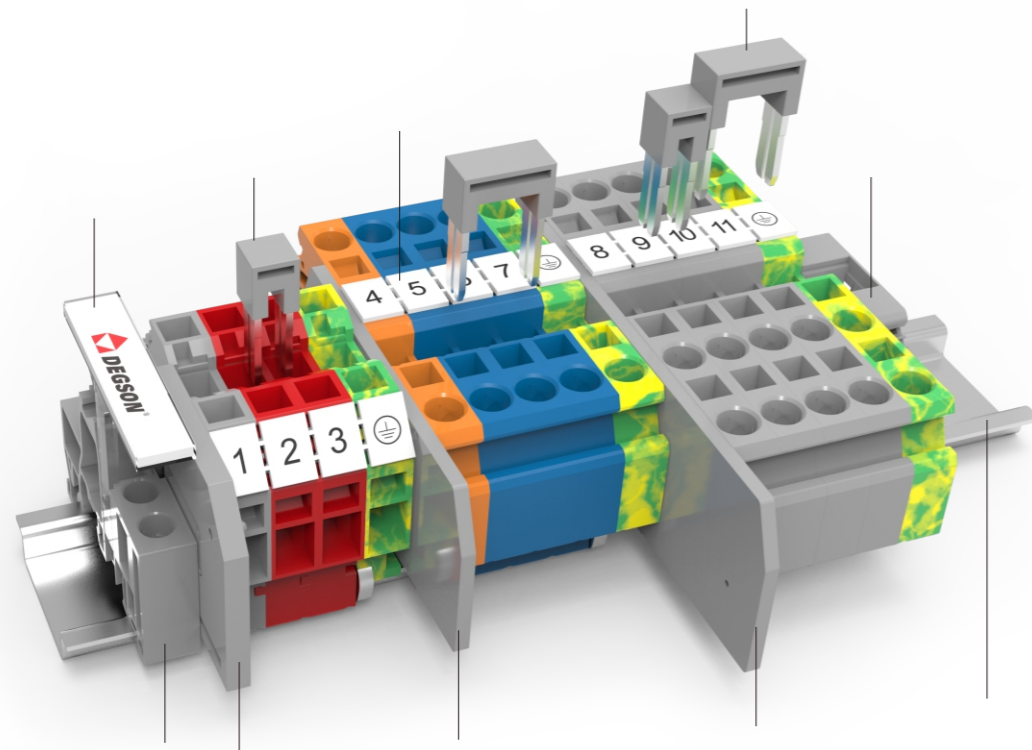
WSF4-TA-08A(H)

Notes: For additional accessories and operating instruction, see page 54.

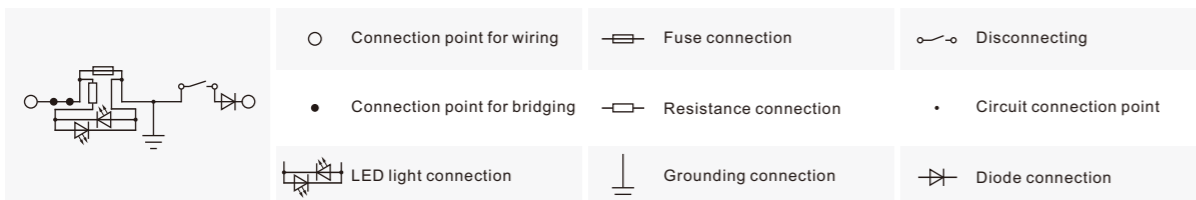
UL US CE ENEC RoHS REACH

CE ENEC RoHS REACH

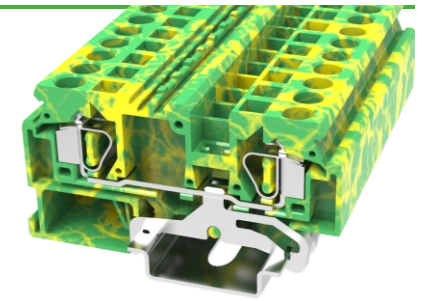
Dimension	UL US CE ENEC RoHS REACH				CE ENEC RoHS REACH			
Width/Length/Height(NS35/7.5&NS35/15) mm	6/60/68(75.5)				6/60/68(75.5)			
Electrical Parameter	IEC IEC60947-7-3		UL UL1059		IEC IEC60947-7-3			
Rated voltage V	400		300		24			
Rated current A	6.3		6.3		6.3			
Wire range mm ² /AWG	0.2-4		28-10		0.2-4		28-10	
Rated surge voltage/Degree of pollution KV/-	8/3				8/3			
Overvoltage category/Insulation material group -/-	III /I				III /I			
Connection capacity	Solid	Stranded	Ferrule (with and without plastic sleeve)		Solid	Stranded	Ferrule (with and without plastic sleeve)	
1 conductor mm ²	0.2-4	0.2-4	0.2-2.5	0.2-2.5	0.2-4	0.2-4	0.2-2.5	0.2-2.5
2 conductors with same cross section, stranded, TWIN ferrules with plastic sleeve mm ²	—	—	—	0.5-1	—	—	—	0.5-1
General information	PA/V0				PA/V0			
Insulation material/Flammability rating(according to UL 94)	-40(-40)~105(221)				-40(-40)~105(221)			
Operation temperature °C (°F)	10-12				10-12			
Stripping length mm	Black (customization demand is available)				Black (customization demand is available)			
Color	0.5x3.5				0.5x3.5			
Slotted screwdriver size (Blade thickness x Width) mm	Accessories				Accessories			
Adjacent jumper (2P)	WFA4				WFA4			
Alternate jumper (2P)	WFB4				WFB4			
Staggered jumper (2P)	/				/			
End cover	/				/			
Marker (Top)	ZB6				ZB6			
Marker (Side)	/				/			
Warning cover	EEA4				EEA4			
DIN rail	NS35/7.5 & NS35/15 (Steel and Aluminium alloy are optional)				NS35/7.5 & NS35/15 (Steel and Aluminium alloy are optional)			
End stopper	E-WS&E-PC&E-MK				E-WS&E-PC&E-MK			



Description	Part No.	Remark
Terminal strip marker carrier	DLM2-01P-17-00A(H)	Suitable for E-PC, use for marking
End stopper	E-PC-01P-11-1000A(H)	Fixing products on NS35 DIN rail
End cover	D-WS6-SD-01P-11-00A(H)	End cover is used for WS6-SD&WS6-SD-PE
Adjacent jumper	WFA6-01P-11-00A(H)	02P bridge, use for WS6 series
End cover	D-WS6-01P-11-00A(H)	End cover is used for WS6&WS6-PE
Marker	ZB8-10P-19-00A(H)	Marker is used for the top of WS6 series
End cover	D-WS6-TW-01P-11-00A(H)	End cover is used for WS6-TW&WS6-TW-PE
Alternate jumper	WFB6-01P-11-00A(H)	02P bridge, use for WS6 series
End stopper	E-WS-01P-11-00A(H)	Fixing products on NS35 DIN rail
DIN rail	NS35/7.5-0150-00A(H)	NS35 DIN rail

Circuit diagram

Spring-cage connection technology

Feed-through, multi-conductor and ground terminal blocks


WS6

WS6-PE

Notes: For additional accessories and operating instruction, see page 61.

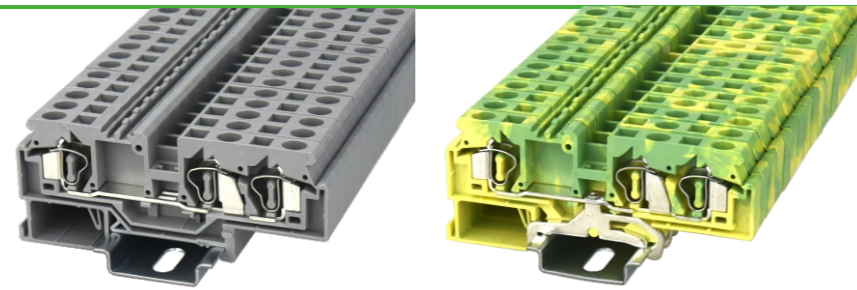
cUL us CE ENE RoHS REACH

cUL us CE ENE RoHS REACH

Dimension	WS6				WS6-PE			
	Width	Length	Height	NS35/7.5&NS35/15	mm	IEC	UL	IEC
Width/Length/Height(NS35/7.5&NS35/15) mm	8/74.5/40(47.5)				8/74.5/40(47.5)			
Electrical Parameter	IEC IEC60947-7-1		UL UL1059		IEC IEC60947-7-2		UL UL1059	
Rated voltage V	800		600		/		/	
Rated current A	41		30		/		/	
Wire range mm ² /AWG	0.2-6		24-10		0.2-6		24-10	
Rated surge voltage/Degree of pollution KV/-	8/3				8/3			
Overtoltage category/Insulation material group -/-	III /I				III /I			
Connection capacity	Solid	Stranded	Ferrule (with and without plastic sleeve)		Solid	Stranded	Ferrule (with and without plastic sleeve)	
1 conductor mm ²	0.2-6	0.2-6	0.2-6	0.2-4	0.2-6	0.2-6	0.2-6	0.2-4
2 conductors with same cross section, stranded, TWIN ferrules with plastic sleeve mm ²	—	—	—	0.5-2.5	—	—	—	0.5-2.5
General information	WS6				WS6-PE			
Insulation material/Flammability rating(according to UL 94)	PA/V0				PA/V0			
Operation temperature °C (°F)	-40(-40)~105(221)				-40(-40)~105(221)			
Stripping length mm	12-13				12-13			
Color	Gray (customization demand is available)				Green-yellow			
Slotted screwdriver size (Blade thickness x Width) mm	0.8x5.5				0.8x5.5			
Accessories	WS6				WS6-PE			
Adjacent jumper (2P)	WFA6				/			
Alternate jumper (2P)	WFB6				/			
Staggered jumper (2P)	/				/			
End cover	D-WS6				D-WS6			
Marker (Top)	ZB8				ZB8			
Marker (Side)	/				/			
Warning cover	EEA6				EEA6			
DIN rail	NS35/7.5 & NS35/15 (Steel and Aluminium alloy are optional)				NS35/7.5 & NS35/15 (Steel and Aluminium alloy are optional)			
End stopper	E-WS&E-PC&E-MK				E-WS&E-PC&E-MK			

Spring-cage connection technology

Feed-through, multi-conductor and ground terminal blocks


WS6-TW

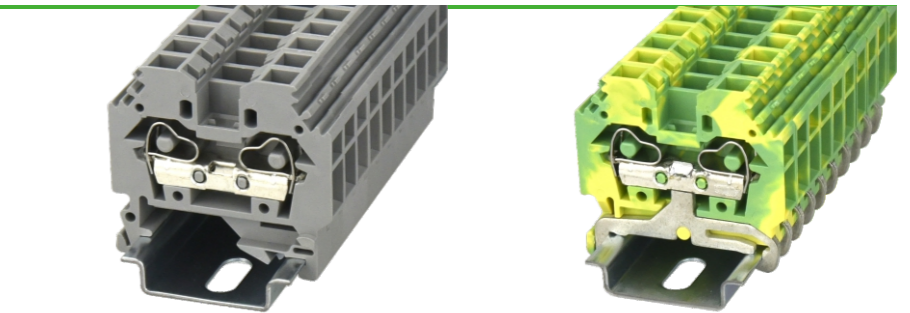
WS6-TW-PE

Notes: For additional accessories and operating instruction, see page 61.

Dimension	WS6-TW				WS6-TW-PE			
Width/Length/Height(NS35/7.5&NS35/15) mm	8/93/40(47.5)				8/93/40(47.5)			
Electrical Parameter	IEC IEC60947-7-1		UL UL1059		IEC IEC60947-7-2		UL UL1059	
Rated voltage V	800		600		/		/	
Rated current A	41		30		/		/	
Wire range mm ² /AWG	0.2-6		24-10		0.2-6		24-10	
Rated surge voltage/Degree of pollution KV/-	8/3				8/3			
Overvoltage category/Insulation material group -/-	III / I				III / I			
Connection capacity	Solid	Stranded	Ferrule (with and without plastic sleeve)		Solid	Stranded	Ferrule (with and without plastic sleeve)	
1 conductor mm ²	0.2-6	0.2-6	0.2-6	0.2-4	0.2-6	0.2-6	0.2-6	0.2-4
2 conductors with same cross section, stranded, TWIN ferrules with plastic sleeve mm ²	—	—	—	0.5-2.5	—	—	—	0.5-2.5
General information	PA/V0				PA/V0			
Insulation material/Flammability rating(according to UL 94)	PA/V0				PA/V0			
Operation temperature °C (°F)	-40(-40)~105(221)				-40(-40)~105(221)			
Stripping length mm	13-14				13-14			
Color	Gray (customization demand is available)				Green-yellow			
Slotted screwdriver size (Blade thickness x Width) mm	0.8x5.5				0.8x5.5			
Accessories								
Adjacent jumper (2P)	WFA6				/			
Alternate jumper (2P)	WFB6				/			
Staggered jumper (2P)	/				/			
End cover	D-WS6-TW				D-WS6-TW			
Marker (Top)	ZB8				ZB8			
Marker (Side)	/				/			
Warning cover	EEA6				EEA6			
DIN rail	NS35/7.5 & NS35/15 (Steel and Aluminium alloy are optional)				NS35/7.5 & NS35/15 (Steel and Aluminium alloy are optional)			
End stopper	E-WS&E-PC&E-MK				E-WS&E-PC&E-MK			

Spring-cage connection technology

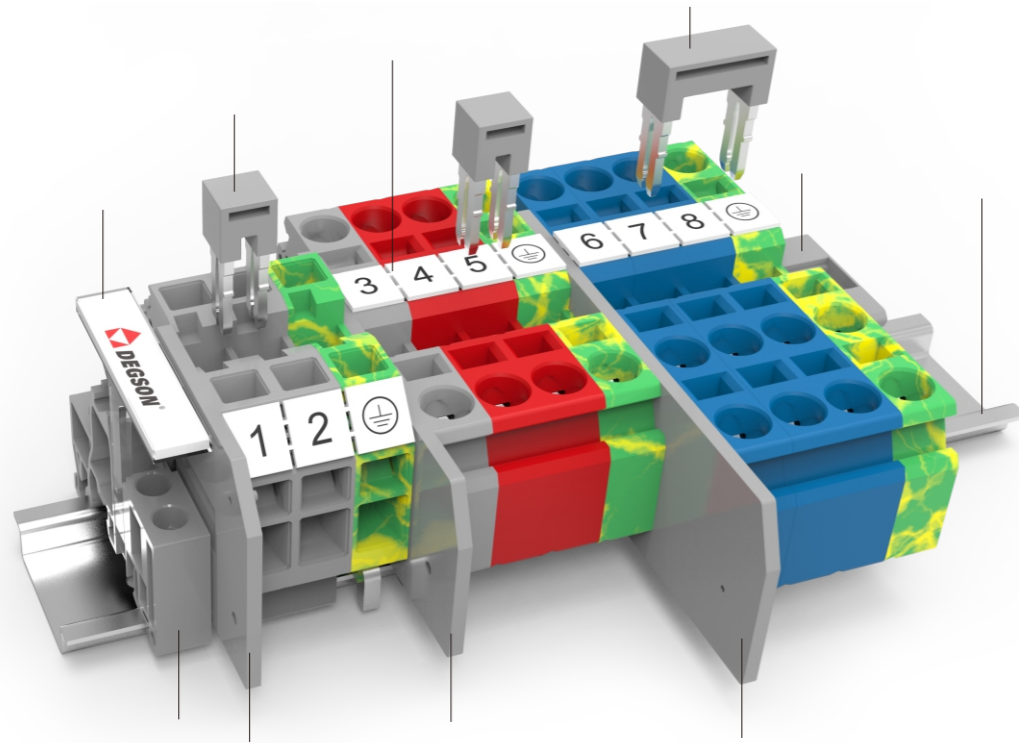
Feed-through, multi-conductor and ground terminal blocks


WS6-SD

WS6-SD-PE

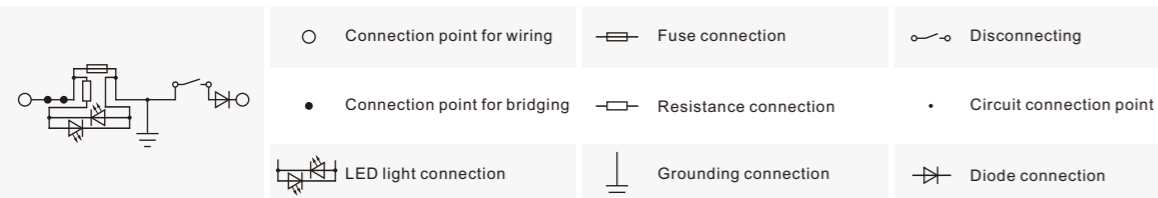
Notes: For additional accessories and operating instruction, see page 61.

Dimension	WS6-SD				WS6-SD-PE			
Width/Length/Height(NS35/7.5&NS35/15) mm	8/46.5/44.5(52)				8/46.5/44.5(52)			
Electrical Parameter	IEC IEC60947-7-1		UL UL1059		IEC IEC60947-7-2		UL UL1059	
Rated voltage V	800		600		/		/	
Rated current A	32		20		/		/	
Wire range mm ² /AWG	0.2-6		24-10		0.2-6		24-10	
Rated surge voltage/Degree of pollution KV/-	8/3				8/3			
Overvoltage category/Insulation material group -/-	III / I				III / I			
Connection capacity	Solid	Stranded	Ferrule (with and without plastic sleeve)		Solid	Stranded	Ferrule (with and without plastic sleeve)	
1 conductor mm ²	0.2-6	0.2-6	0.2-6	0.2-4	0.2-6	0.2-6	0.2-6	0.2-4
2 conductors with same cross section, stranded, TWIN ferrules with plastic sleeve mm ²	—	—	—	0.5-2.5	—	—	—	0.5-2.5
General information	PA/V0				PA/V0			
Insulation material/Flammability rating(according to UL 94)	PA/V0				PA/V0			
Operation temperature °C (°F)	-40(-40)~105(221)				-40(-40)~105(221)			
Stripping length mm	9-10				9-10			
Color	Gray (customization demand is available)				Green-yellow			
Slotted screwdriver size (Blade thickness x Width) mm	0.8x5.5				0.8x5.5			
Accessories								
Adjacent jumper (2P)	WFA6				/			
Alternate jumper (2P)	WFB6				/			
Staggered jumper (2P)	/				/			
End cover	D-WS6-SD				D-WS6-SD			
Marker (Top)	/				/			
Marker (Side)	ZB8				ZB8			
Warning cover	EEA6				EEA6			
DIN rail	NS35/7.5 & NS35/15 (Steel and Aluminium alloy are optional)				NS35/7.5 & NS35/15 (Steel and Aluminium alloy are optional)			
End stopper	E-WS&E-PC&E-MK				E-WS&E-PC&E-MK			



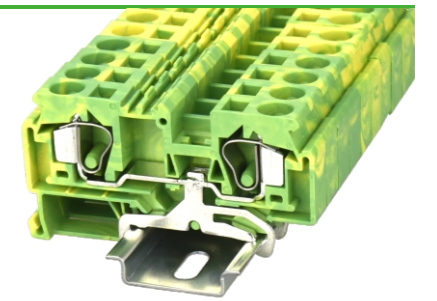
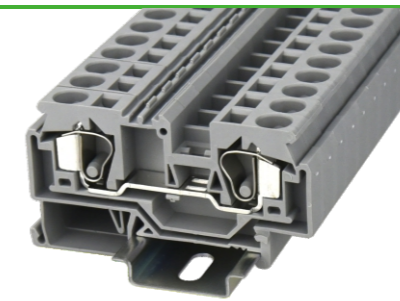
Description	Part No.	Remark
Terminal strip marker carrier	DLM2-01P-17-00A(H)	Suitable for E-PC, use for marking
End stopper	E-PC-01P-11-1000A(H)	Fixing products on NS35 DIN rail
End cover	D-WS10-SD-01P-11-00A(H)	End cover is used for WS10-SD&WS10-SD-PE
Adjacent jumper	WFA10-01P-11-00A(H)	02P bridge, use for WS10 series
End cover	D-WS10-01P-11-00A(H)	End cover is used for WS10&WS10-PE
Marker	ZB10-10P-19-00A(H)	Marker is used for the top of WS10 series
End cover	D-WS10-TW-01P-11-00A(H)	End cover is used for WS10-TW&WS10-TW-PE
Alternate jumper	WFB10-01P-11-00A(H)	02P bridge, use for WS10 series
End stopper	E-WS-01P-11-00A(H)	Fixing products on NS35 DIN rail
DIN rail	NS35/7.5-0150-00A(H)	NS35 DIN rail

Circuit diagram



Spring-cage connection technology

Feed-through, multi-conductor and ground terminal blocks



WS10



WS10-PE

Notes: For additional accessories and operating instruction, see page 65.

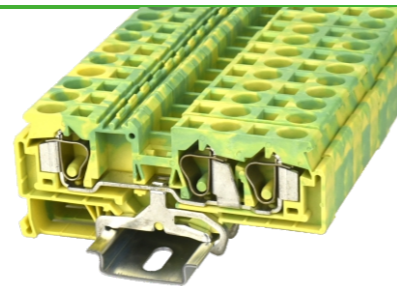
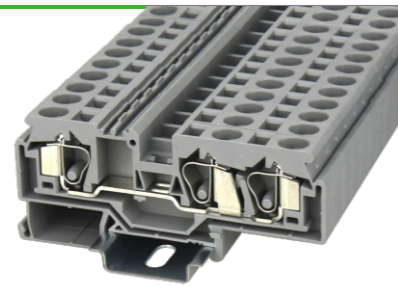
UL US CE ENE RoHS REACH

UL US CE ENE RoHS REACH

Dimension	10/77.5/42.5(50)				10/77.5/42.5(50)			
Width/Length/Height(NS35/7.5&NS35/15) mm	10/77.5/42.5(50)				10/77.5/42.5(50)			
Electrical Parameter	IEC IEC60947-7-1		UL UL1059		IEC IEC60947-7-2		UL UL1059	
Rated voltage V	800		600		/		/	
Rated current A	57		50		/		/	
Wire range mm ² /AWG	0.2-10		24-8		0.2-10		24-8	
Rated surge voltage/Degree of pollution KV/-	8/3				8/3			
Overtoltage category/Insulation material group -/-	III /I				III /I			
Connection capacity	Solid	Stranded	Ferrule (with and without plastic sleeve)		Solid	Stranded	Ferrule (with and without plastic sleeve)	
1 conductor mm ²	0.2-10	0.2-10	0.2-10	0.2-10	0.2-10	0.2-10	0.2-10	0.2-10
2 conductors with same cross section, stranded, TWIN ferrules with plastic sleeve mm ²	-	-	-	0.5-4	-	-	-	0.5-4
General information	PA/V0				PA/V0			
Insulation material/Flammability rating(according to UL 94)	PA/V0				PA/V0			
Operation temperature °C (°F)	-40(-40)~105(221)				-40(-40)~105(221)			
Stripping length mm	13-14				13-14			
Color	Gray (customization demand is available)				Green-yellow			
Slotted screwdriver size (Blade thickness x Width) mm	0.8x5.5				0.8x5.5			
Accessories								
Adjacent jumper (2P)					WFA10 /			
Alternate jumper (2P)					WFB10 /			
Staggered jumper (2P)					/ /			
End cover					D-WS10 D-WS10			
Marker (Top)					ZB10 ZB10			
Marker (Side)					/ /			
Warning cover					EEA10 EEA10			
DIN rail	NS35/7.5 & NS35/15 (Steel and Aluminium alloy are optional)				NS35/7.5 & NS35/15 (Steel and Aluminium alloy are optional)			
End stopper					E-WS&E-PC&E-MK E-WS&E-PC&E-MK			

Spring-cage connection technology

Feed-through, multi-conductor and ground terminal blocks


WS10-TW
WS10-TW-PE

Notes: For additional accessories and operating instruction, see page 65.

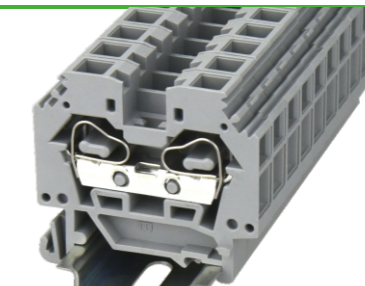
UL US CE ENEC RoHS REACH

CE ENEC RoHS REACH

Dimension	UL US CE ENEC RoHS REACH				CE ENEC RoHS REACH			
Width/Length/Height(NS35/7.5&NS35/15) mm	10/97.5/42.5(50)				10/97.5/42.5(50)			
Electrical Parameter	IEC IEC60947-7-1		UL UL1059		IEC IEC60947-7-2		UL UL1059	
Rated voltage V	800		600		/		/	
Rated current A	57		50		/		/	
Wire range mm ² /AWG	0.2-10		24-8		0.2-10		24-8	
Rated surge voltage/Degree of pollution KV/-	8/3				8/3			
Overvoltage category/Insulation material group -/-	III /I				III /I			
Connection capacity	Solid	Stranded	Ferrule (with and without plastic sleeve)		Solid	Stranded	Ferrule (with and without plastic sleeve)	
1 conductor mm ²	0.2-10	0.2-10	0.2-10	0.2-10	0.2-10	0.2-10	0.2-10	0.2-10
2 conductors with same cross section, stranded, TWIN ferrules with plastic sleeve mm ²	—	—	—	0.5-4	—	—	—	0.5-4
General information	PA/V0				PA/V0			
Insulation material/Flammability rating(according to UL 94)	PA/V0				PA/V0			
Operation temperature °C (°F)	-40(-40)~105(221)				-40(-40)~105(221)			
Stripping length mm	13-14				13-14			
Color	Gray (customization demand is available)				Green-yellow			
Slotted screwdriver size (Blade thickness x Width) mm	0.8x5.5				0.8x5.5			
Accessories								
Adjacent jumper (2P)	WFA10				/			
Alternate jumper (2P)	WFB10				/			
Staggered jumper (2P)	/				/			
End cover	D-WS10-TW				D-WS10-TW			
Marker (Top)	ZB10				ZB10			
Marker (Side)	/				/			
Warning cover	EEA10				EEA10			
DIN rail	NS35/7.5 & NS35/15 (Steel and Aluminium alloy are optional)				NS35/7.5 & NS35/15 (Steel and Aluminium alloy are optional)			
End stopper	E-WS&E-PC&E-MK				E-WS&E-PC&E-MK			

Spring-cage connection technology

Feed-through, multi-conductor and ground terminal blocks

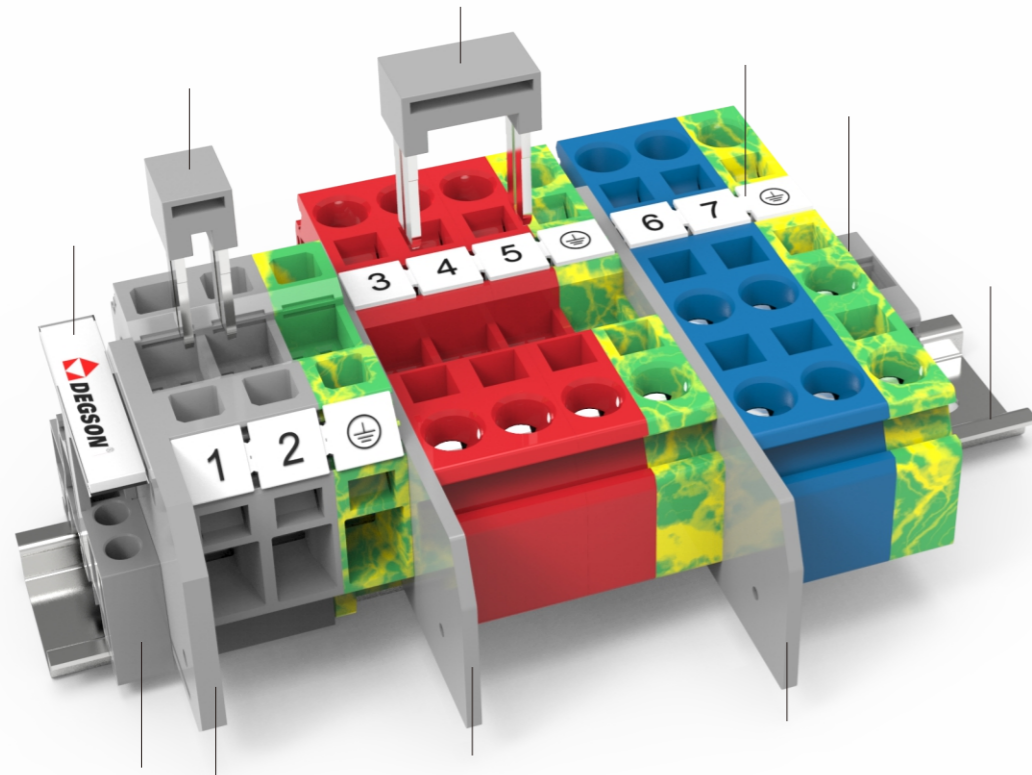

WS10-SD
WS10-SD-PE

Notes: For additional accessories and operating instruction, see page 65.

CE ENEC RoHS REACH

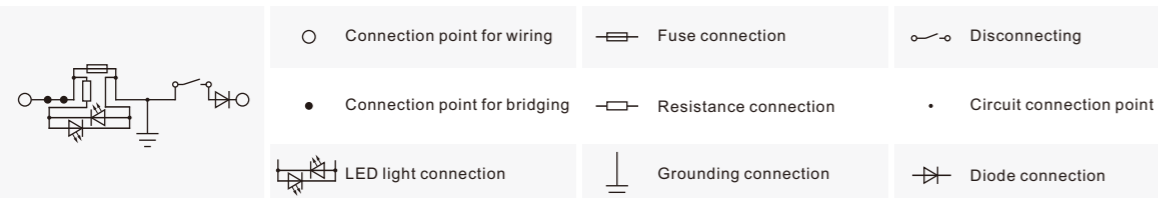
CE ENEC RoHS REACH

Dimension	CE ENEC RoHS REACH				CE ENEC RoHS REACH			
Width/Length/Height(NS35/7.5&NS35/15) mm	10/52/49(56.5)				10/52/49(56.5)			
Electrical Parameter	IEC IEC60947-7-1		UL UL1059		IEC IEC60947-7-2		UL UL1059	
Rated voltage V	800		600		/		/	
Rated current A	57		50		/		/	
Wire range mm ² /AWG	0.2-10		24-8		0.2-6		24-10	
Rated surge voltage/Degree of pollution KV/-	8/3				8/3			
Overvoltage category/Insulation material group -/-	III /I				III /I			
Connection capacity	Solid	Stranded	Ferrule (with and without plastic sleeve)		Solid	Stranded	Ferrule (with and without plastic sleeve)	
1 conductor mm ²	0.2-10	0.2-10	0.2-10	0.2-6.0	0.2-10	0.2-10	0.2-10	0.2-6.0
2 conductors with same cross section, stranded, TWIN ferrules with plastic sleeve mm ²	—	—	—	0.5-4	—	—	—	0.5-4
General information	PA/V0				PA/V0			
Insulation material/Flammability rating(according to UL 94)	PA/V0				PA/V0			
Operation temperature °C (°F)	-40(-40)~105(221)				-40(-40)~105(221)			
Stripping length mm	13-14				13-14			
Color	Gray (customization demand is available)				Green-yellow			
Slotted screwdriver size (Blade thickness x Width) mm	0.8x5.5				0.8x5.5			
Accessories								
Adjacent jumper (2P)	WFA10				/			
Alternate jumper (2P)	WFB10				/			
Staggered jumper (2P)	/				/			
End cover	D-WS10-SD				D-WS10-SD			
Marker (Top)	/				/			
Marker (Side)	ZB10				ZB10			
Warning cover	EEA10				EEA10			
DIN rail	NS35/7.5 & NS35/15 (Steel and Aluminium alloy are optional)				NS35/7.5 & NS35/15 (Steel and Aluminium alloy are optional)			
End stopper	E-WS&E-PC&E-MK				E-WS&E-PC&E-MK			



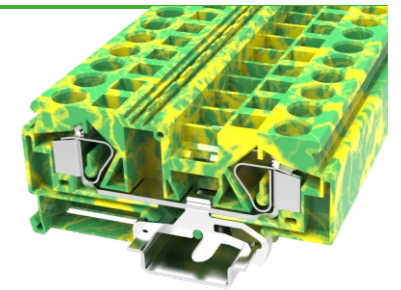
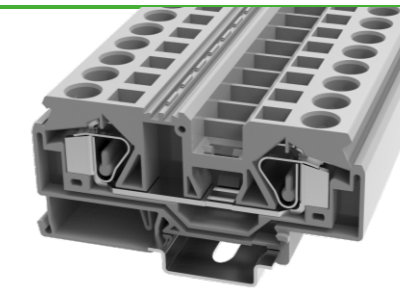
Description	Part No.	Remark
Terminal strip marker carrier	DLM2-01P-17-00A(H)	Suitable for E-PC, use for marking
End stopper	E-PC-01P-11-1000A(H)	Fixing products on NS35 DIN rail
End cover	D-WS16-SD-01P-11-00A(H)	End cover is used for WS16-SD&WS16-SD-PE
Adjacent jumper	WFA16-01P-11-00A(H)	02P bridge, use for WS16 series
End cover	D-WS16-01P-11-00A(H)	End cover is used for WS16&WS16-PE
Alternate jumper	WFB16-01P-11-00A(H)	02P bridge, use for WS16 series
End cover	D-WS16-TW-01P-11-00A(H)	End cover is used for WS16-TW&WS16-TW-PE
Marker	ZT12-10P-19-00A(H)	Marker is used for the top of Ws16 series
End stopper	E-WS-01P-11-00A(H)	Fixing products on NS35 DIN rail
DIN rail	NS35/7.5-0150-00A(H)	NS35 DIN rail

Circuit diagram



Spring-cage connection technology

Feed-through, multi-conductor and ground terminal blocks



WS16



WS16-PE

Notes: For additional accessories and operating instruction, see page 69.

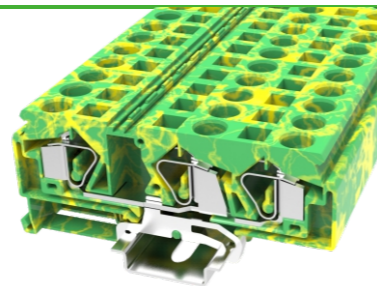
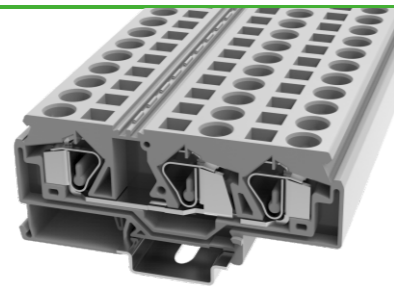
UL US CE ENE RoHS REACH

CE ENE RoHS REACH

Dimension	12/94.5/45(52.5)			
	Width/Length/Height(NS35/7.5&NS35/15) mm	12/94.5/45(52.5)		
Electrical Parameter	IEC	UL	IEC	UL
	IEC60947-7-1	UL1059	IEC60947-7-2	UL1059
Rated voltage V	800	600	/	/
Rated current A	76	65	/	/
Wire range mm ² /AWG	0.2-16	24-6	0.2-16	24-6
Rated surge voltage/Degree of pollution KV/-	8/3			
Overtoltage category/Insulation material group -/-	III /I			
Connection capacity	Solid	Stranded	Ferrule (with and without plastic sleeve)	
	1 conductor mm ²	0.2-16	0.2-16	0.2-16
2 conductors with same cross section, stranded, TWIN ferrules with plastic sleeve mm ²	-	-	-	0.5-6
General information				
Insulation material/Flammability rating(according to UL 94)	PA/V0			
Operation temperature °C (°F)	-40(-40)~105(221)			
Stripping length mm	17-18			
Color	Gray (customization demand is available)			
Slotted screwdriver size (Blade thickness x Width) mm	0.8x5.5			
Accessories				
Adjacent jumper (2P)	WFA16		/	
Alternate jumper (2P)	WFB16		/	
Staggered jumper (2P)	/		/	
End cover	D-WS16		D-WS16	
Marker (Top)	ZT12		ZT12	
Marker (Side)	/		/	
Warning cover	EEA16		EEA16	
DIN rail	NS35/7.5 & NS35/15 (Steel and Aluminium alloy are optional)			
End stopper	E-WS&E-PC&E-MK			

Spring-cage connection technology

Feed-through, multi-conductor and ground terminal blocks


WS16-TW
WS16-TW-PE

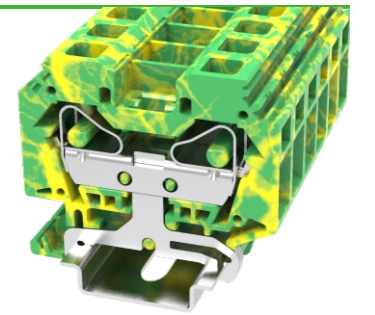
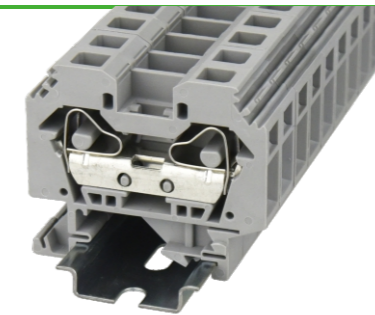
Notes: For additional accessories and operating instruction, see page 69.

CE ENEC RoHS REACH
CE ENEC RoHS REACH

Dimension	CE ENEC RoHS REACH			
Width/Length/Height(NS35/7.5&NS35/15) mm	12/104.5/45(52.5)			
Electrical Parameter	IEC IEC60947-7-1	UL UL1059	IEC IEC60947-7-2	UL UL1059
Rated voltage V	800	600	/	/
Rated current A	76	65	/	/
Wire range mm ² /AWG	0.2-16	24-6	0.2-16	24-6
Rated surge voltage/Degree of pollution KV/-	8/3		8/3	
Overvoltage category/Insulation material group -/-	III / I		III / I	
Connection capacity	Solid	Stranded	Ferrule (with and without plastic sleeve)	
1 conductor mm ²	0.2-16	0.2-16	0.2-16	0.2-10
2 conductors with same cross section, stranded, TWIN ferrules with plastic sleeve mm ²	—	—	—	0.5-6
General information				
Insulation material/Flammability rating(according to UL 94)	PA/V0			
Operation temperature °C (°F)	-40(-40)~105(221)			
Stripping length mm	16-17			
Color	Gray (customization demand is available)			
Slotted screwdriver size (Blade thickness x Width) mm	0.8x5.5			
Accessories				
Adjacent jumper (2P)	/			
Alternate jumper (2P)	/			
Staggered jumper (2P)	/			
End cover	D-WS16-TW			
Marker (Top)	ZT12			
Marker (Side)	/			
Warning cover	EEA16			
DIN rail	NS35/7.5 & NS35/15 (Steel and Aluminium alloy are optional)			
End stopper	E-WS&E-PC&E-MK			

Spring-cage connection technology

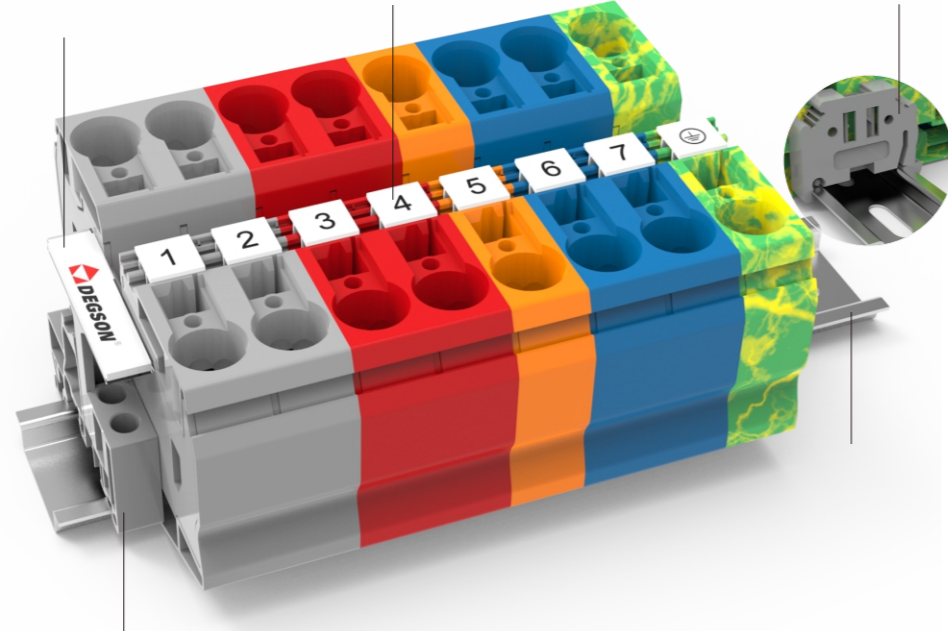
Feed-through, multi-conductor and ground terminal blocks


WS16-SD
WS16-SD-PE

Notes: For additional accessories and operating instruction, see page 69.

CE ENEC RoHS REACH
CE ENEC RoHS REACH

Dimension	CE ENEC RoHS REACH			
Width/Length/Height(NS35/7.5&NS35/15) mm	12/58/52.6(60.1)			
Electrical Parameter	IEC IEC60947-7-1	UL UL1059	IEC IEC60947-7-2	UL UL1059
Rated voltage V	800	600	/	/
Rated current A	76	65	/	/
Wire range mm ² /AWG	0.2-16	24-6	0.2-16	24-6
Rated surge voltage/Degree of pollution KV/-	8/3		8/3	
Overvoltage category/Insulation material group -/-	III / I		III / I	
Connection capacity	Solid	Stranded	Ferrule (with and without plastic sleeve)	
1 conductor mm ²	0.2-16	0.2-16	0.2-16	0.2-10
2 conductors with same cross section, stranded, TWIN ferrules with plastic sleeve mm ²	—	—	—	0.5-6
General information				
Insulation material/Flammability rating(according to UL 94)	PA/V0			
Operation temperature °C (°F)	-40(-40)~105(221)			
Stripping length mm	16-17			
Color	Gray (customization demand is available)			
Slotted screwdriver size (Blade thickness x Width) mm	0.8x5.5			
Accessories				
Adjacent jumper (2P)	WFA16		/	
Alternate jumper (2P)	WFB16		/	
Staggered jumper (2P)	/			
End cover	D-WS16-SD			
Marker (Top)	/			
Marker (Side)	ZT12			
Warning cover	EEA16			
DIN rail	NS35/7.5 & NS35/15 (Steel and Aluminium alloy are optional)			
End stopper	E-WS&E-PC&E-MK			

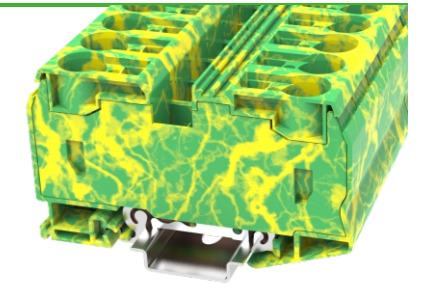
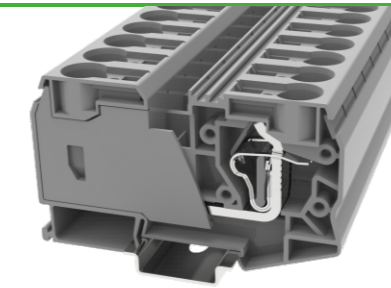


Description	Part No.	Remark
Terminal strip marker carrier	DLM2-01P-17-00A(H)	Suitable for E-PC, use for marking
End stopper	E-PC-01P-11-1000A(H)	Fixing products on NS35 DIN rail
Marker	ZT12-10P-19-00A(H)	Marker is used for the top of WS35 series
End stopper	E-WS-01P-11-00A(H)	Fixing products on NS35 DIN rail
DIN rail	NS35/7.5-0150-00A(H)	NS35 DIN rail

Circuit diagram			
	Connection point for wiring		Fuse connection
	Connection point for bridging		Resistance connection
	LED light connection		Grounding connection
	Disconnecting		Diode connection
	Circuit connection point		

Spring-cage connection technology

Feed-through and ground terminal blocks


WS35

WS35-PE

Notes: For additional accessories and operating instruction, see page 73.

Dimension	CE ENEC RoHS REACH				CE ENEC RoHS REACH				
	Width/Length/Height(NS35/7.5&NS35/15) mm		16/99.9/59.2(66.7)		Width/Length/Height(NS35/7.5&NS35/15) mm		16/99.9/59.2(66.7)		
Electrical Parameter	IEC IEC60947-7-1		UL UL1059		IEC IEC60947-7-2		UL UL1059		
	Rated voltage V	1000		600		/		/	
Rated current A	125		115		/		/		
Wire range mm ² /AWG	0.5-35		14-2		0.5-35		14-2		
Rated surge voltage/Degree of pollution KV/-	8/3		8/3		8/3		8/3		
Overvoltage category/Insulation material group -/-	III /I		III /I		III /I		III /I		
Connection capacity	Solid	Stranded	Ferrule (with and without plastic sleeve)		Solid	Stranded	Ferrule (with and without plastic sleeve)		
	1 conductor mm ²	2.5-35	2.5-35	2.5-35	2.5-35	2.5-35	2.5-35	2.5-35	
2 conductors with same cross section, stranded, TWIN ferrules with plastic sleeve mm ²	—	—	—	0.5-6	—	—	—	0.5-6	
General information									
Insulation material/Flammability rating(according to UL 94)	PA/V0				PA/V0				
Operation temperature °C (°F)	-40(-40)~105(221)				-40(-40)~105(221)				
Stripping length mm	25				25				
Color	Gray (customization demand is available)				Green-yellow				
Slotted screwdriver size (Blade thickness x Width) mm	1x5.5				1x5.5				
Accessories									
Adjacent jumper (2P)	/				/				
Alternate jumper (2P)	/				/				
Staggered jumper (2P)	/				/				
End cover	/				/				
Marker (Top)	 1, 2, 3, 4, 5 A, B, C, D, E		ZT12		ZT12		ZT12		
Marker (Side)	/				/				
Warning cover	/				/				
DIN rail	NS35/7.5 & NS35/15 (Steel and Aluminium alloy are optional)				NS35/7.5 & NS35/15 (Steel and Aluminium alloy are optional)				
End stopper	E-WS&E-PC&E-MK				E-WS&E-PC&E-MK				